

Recombinant Human TREM1 protein, His-tagged

Cat. No. TREM1-3842H Lot. No. (See product label)

SPECIFICATION

Product Overview	Recombinant Human TREM1 protein(NP_061113.1)(Ala21-Arg200), fused with C-terminal His tag, was expressed in HEK293.
Species	Human
Source	HEK293
ProteinLength	Ala21-Arg200
Tag	C-His
Form	Lyophilized from 0.22µm filtered solution in PBS (pH 7.4). Normally 5% trehalose is added as protectant before lyophilization.
Bio-activity	Human PGLYRP1, hFc Tag captured on CM5 Chip via Protein A can bind Human TREM1, His Tag with an affinity constant of 17.39 µM as determined in SPR assay (Biacore T200).
Molecular Mass	The protein has a predicted MW of 21.4 kDa. Due to glycosylation, the protein migrates to 40-60 kDa based on Tris-Bis PAGE result.
Endotoxin	Less than 1EU per µg by the LAL method.
Purity	> 95% as determined by Tris-Bis PAGE;> 95% as determined by HPLC

 Tel: 1-631-559-9269 1-516-512-3133

 Email: info@creative-biomart.com  Fax: 1-631-938-8127

 45-1 Ramsey Road, Shirley, NY 11967, USA

Storage Reconstituted protein stable at -80°C for 12 months, 4°C for 1 week. Use a manual defrost freezer and avoid repeated freeze-thaw cycles.

Reconstitution Centrifuge tubes before opening. Reconstituting to a concentration more than 100 µg/ml is recommended. Dissolve the lyophilized protein in distilled water.

GENE INFORMATION

Gene Name [TREM1 triggering receptor expressed on myeloid cells 1 \[Homo sapiens \]](#)

Official Symbol [TREM1](#)

Synonyms [TREM1](#); [triggering receptor expressed on myeloid cells 1](#); [CD354](#); [TREM 1](#); [triggering-receptor TREM1](#); [triggering receptor expressed on monocytes 1](#); [TREM-1](#);

Gene ID [54210](#)

mRNA Refseq [NM_001242589](#)

Protein Refseq [NP_001229518](#)

MIM [605085](#)

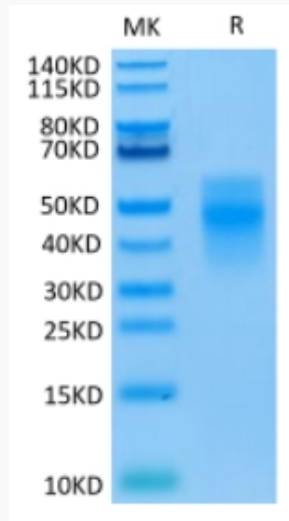
UniProt ID [Q9NP99](#)

 Tel: 1-631-559-9269 1-516-512-3133

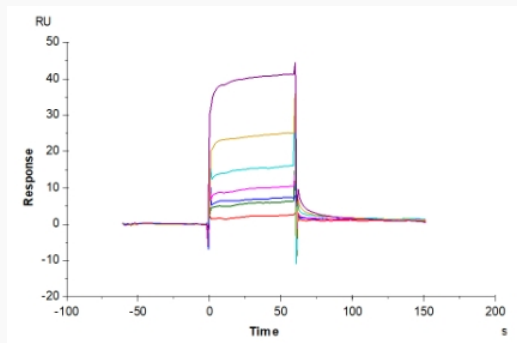
 Email: info@creative-biomart.com  Fax: 1-631-938-8127

 45-1 Ramsey Road, Shirley, NY 11967, USA

Tris-Bis PAGE



SPR Data



 Tel: 1-631-559-9269 1-516-512-3133

 Email: info@creative-biomart.com  Fax: 1-631-938-8127

 45-1 Ramsey Road, Shirley, NY 11967, USA