

## Recombinant Human TREM1 Protein, His-tagged

Cat. No. TREM1-485H Lot. No. (See product label)

### SPECIFICATION

<b>Product Overview</b>	Recombinant Human TREM1 Protein (Ala21-Asn205) with N-His tag was expressed in CHO.
<b>Species</b>	Human
<b>Source</b>	CHO
<b>ProteinLength</b>	Ala21-Asn205
<b>Description</b>	This gene encodes a receptor belonging to the Ig superfamily that is expressed on myeloid cells. This protein amplifies neutrophil and monocyte-mediated inflammatory responses triggered by bacterial and fungal infections by stimulating release of pro-inflammatory chemokines and cytokines, as well as increased surface expression of cell activation markers. Alternatively spliced transcript variants encoding different isoforms have been noted for this gene.
<b>Form</b>	Freeze-dried powder
<b>Molecular Mass</b>	Predicted Molecular Mass: 22.4 kDa Accurate Molecular Mass: 40 kDa
<b>Purity</b>	> 95%
<b>Applications</b>	Positive Control; Immunogen; SDS-PAGE; WB.

 Tel: 1-631-559-9269 1-516-512-3133

 Email: [info@creative-biomart.com](mailto:info@creative-biomart.com)  Fax: 1-631-938-8127

 45-1 Ramsey Road, Shirley, NY 11967, USA

<b>Stability</b>	The thermal stability is described by the loss rate. The loss rate was determined by accelerated thermal degradation test, that is, incubate the protein at 37 centigrade for 48h, and no obvious degradation and precipitation were observed. The loss rate is less than 5% within the expiration date under appropriate storage condition.
<b>Storage</b>	Avoid repeated freeze/thaw cycles. Store at 2-8 centigrade for one month. Aliquot and store at -80 centigrade for 12 months.
<b>Storage Buffer</b>	PBS, pH7.4, containing 0.01% SKL, 1 mM DTT, 5% Trehalose and Proclin300.
<b>Reconstitution</b>	Reconstitute in sterile water to a concentration of 0.1-1.0 mg/mL. Do not vortex.

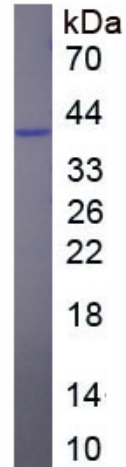
## GENE INFORMATION

<b>Gene Name</b>	TREM1 triggering receptor expressed on myeloid cells 1 [ Homo sapiens (human) ]
<b>Official Symbol</b>	TREM1
<b>Synonyms</b>	TREM1; triggering receptor expressed on myeloid cells 1; CD354; TREM 1; triggering-receptor TREM1; triggering receptor expressed on monocytes 1; TREM-1
<b>Gene ID</b>	54210
<b>mRNA Refseq</b>	NM_001242589
<b>Protein Refseq</b>	NP_001229518
<b>MIM</b>	605085
<b>UniProt ID</b>	Q9NP99

 Tel: 1-631-559-9269 1-516-512-3133

 Email: [info@creative-biomart.com](mailto:info@creative-biomart.com)  Fax: 1-631-938-8127

 45-1 Ramsey Road, Shirley, NY 11967, USA



Tel: 1-631-559-9269 1-516-512-3133

Email: [info@creative-biomart.com](mailto:info@creative-biomart.com) Fax: 1-631-938-8127

45-1 Ramsey Road, Shirley, NY 11967, USA