

Recombinant Human TREM2 Protein, GST/His-tagged

Cat. No. TREM2-02H Lot. No. (See product label)

SPECIFICATION

Product Overview	Purified recombinant protein of Human triggering receptor expressed on myeloid cells 2 (TREM2), full length, with N-terminal GST and C-terminal His tag, expressed in E. coli.
Species	Human
Source	E.coli
Description	This gene encodes a membrane protein that forms a receptor signaling complex with the TYRO protein tyrosine kinase binding protein. The encoded protein functions in immune response and may be involved in chronic inflammation by triggering the production of constitutive inflammatory cytokines. Defects in this gene are a cause of polycystic lipomembranous osteodysplasia with sclerosing leukoencephalopathy (PLOSL). Alternative splicing results in multiple transcript variants encoding different isoforms.
Molecular Mass	51.4 kDa
Purity	> 80% as determined by SDS-PAGE and Coomassie blue staining
Stability	Stable for 12 months from the date of receipt of the product under proper storage and handling conditions. Avoid repeated freeze-thaw cycles.
Storage	Store at -80 centigrade.

 Tel: 1-631-559-9269 1-516-512-3133

 Email: info@creative-biomart.com  Fax: 1-631-938-8127

 45-1 Ramsey Road, Shirley, NY 11967, USA

Concentration	>50 µg/mL as determined by microplate BCA method
Storage Buffer	25 mM Tris, pH8.0, 150 mM NaCl, 10% glycerol, 1% Sarkosyl.
Full Length	Full L.
GENE INFORMATION	
Gene Name	TREM2 triggering receptor expressed on myeloid cells 2 [Homo sapiens (human)]
Official Symbol	TREM2
Synonyms	TREM2; triggering receptor expressed on myeloid cells 2; PLOSL2; TREM-2; Trem2a; Trem2b; Trem2c; triggering receptor expressed on myeloid cells 2; triggering receptor expressed on monocytes 2; triggering receptor expressed on myeloid cells 2a
Gene ID	54209
mRNA Refseq	NM_018965
Protein Refseq	NP_061838
MIM	605086
UniProt ID	Q9NZC2

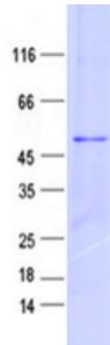
 Tel: 1-631-559-9269 1-516-512-3133

 Email: info@creative-biomart.com  Fax: 1-631-938-8127

 45-1 Ramsey Road, Shirley, NY 11967, USA



SDS-PAGE



Tel: 1-631-559-9269 1-516-512-3133

Email: info@creative-biomart.com Fax: 1-631-938-8127

45-1 Ramsey Road, Shirley, NY 11967, USA