

## Recombinant Human TREM2 protein, His-Avi-tagged

Cat. No. TREM2-092H    Lot. No. (See product label)

### SPECIFICATION

<b>Product Overview</b>	Human Trem2 Protein is expressed from mammalian with His and Avi Tag at the C-terminal. It contains His19-Ser174.
<b>Species</b>	Human
<b>Source</b>	HEK293
<b>ProteinLength</b>	His19-Ser174
<b>Description</b>	TREM-2 (Triggering Receptor Expressed on Myeloid cells-2) is a 35 kDa type I transmembrane member of the TREM family and Ig superfamily. Mature human TREM-2 consists of a 156 amino acid (aa) extracellular domain (ECD) with one V-type Ig-like domain, a 21 aa transmembrane (TM) domain, and a 35 aa cytoplasmic tail. TREM-2 forms a receptor signaling complex with TYROBP which mediates signaling and cell activation following ligand binding (PubMed:10799849). Acts as a receptor for amyloid-beta protein 42, a cleavage product of the amyloid-beta precursor protein APP, and mediates its uptake and degradation by microglia.
<b>Form</b>	Supplied as 0.22um filtered solution in PBS (pH 7.4).
<b>Molecular Mass</b>	The protein has a predicted MW of 20.3 kDa. Due to glycosylation, the protein migrates to 30- 38KDa based on Bis-Tris PAGE result.
<b>Endotoxin</b>	Less than 0.2 EU per ug by the LAL method.

 Tel: 1-631-559-9269    1-516-512-3133

 Email: [info@creative-biomart.com](mailto:info@creative-biomart.com)     Fax: 1-631-938-8127

 45-1 Ramsey Road, Shirley, NY 11967, USA

**Purity** > 95% as determined by Bis-Tris PAGE

**Storage** The product should be stored at -70°C. Please do not repeated freeze-thaw cycles.

## GENE INFORMATION

**Gene Name** [TREM2 triggering receptor expressed on myeloid cells 2 \[ Homo sapiens \(human\) \]](#)

**Official Symbol** [TREM2](#)

**Synonyms** PLOSL2; TREM2; TREM-2; Trem2a; Trem2b; Trem2c; TREM-2triggering receptor expressed on myeloid cells 2a; Triggering receptor expressed on monocytes 2; triggering receptor expressed on myeloid cells 2

**Gene ID** [54209](#)

**mRNA Refseq** [NM\\_001271821.2](#)

**Protein Refseq** [NP\\_001258750.1](#)

**MIM** [605086](#)

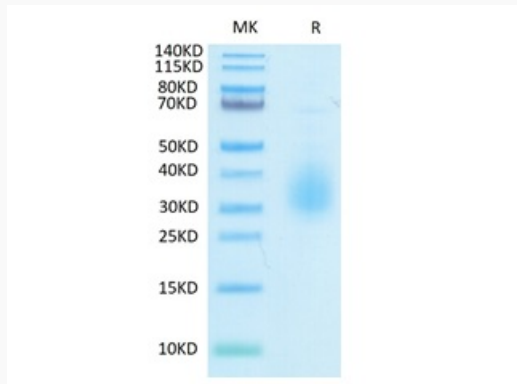
**UniProt ID** [Q9NZC2](#)

 Tel: 1-631-559-9269 1-516-512-3133

 Email: [info@creative-biomart.com](mailto:info@creative-biomart.com)  Fax: 1-631-938-8127

 45-1 Ramsey Road, Shirley, NY 11967, USA

**Tris-Bis PAGE of  
TREM2-092H**



 Tel: 1-631-559-9269 1-516-512-3133

 Email: [info@creative-biomart.com](mailto:info@creative-biomart.com)  Fax: 1-631-938-8127

 45-1 Ramsey Road, Shirley, NY 11967, USA