

Recombinant Human TREM2 Protein (19-174 aa), His-tagged

Cat. No. TREM2-1933H Lot. No. (See product label)

SPECIFICATION

Product Overview	Recombinant Human TREM2 Protein (19-174 aa) is produced by Yeast expression system. This protein is fused with a 6xHis tag at the N-terminal. Research Area: Immunology. Protein Description: Partial.
Species	Human
Source	Yeast
ProteinLength	19-174 aa
Description	May have a role in chronic inflammations and may stimulate production of constitutive rather than inflammatory chemokines and cytokines. Forms a receptor signaling complex with TYROBP and triggers activation of the immune responses in macrophages and dendritic cells.
Form	Tris-based buffer,50% glycerol
Molecular Mass	19.4 kDa
AA Sequence	HNTTVFQGVAGQSLQVSCPYDSMKHWGRRKAWCRQLGEGPCQRVVSTHNLWL LSFLRRWNGSTAITDDTLGGTLTITLRNLQPHDAGLYQCQSLHGSEADTLRKVLVEV LADPLDHRDAGDLWFPGESESFEDAHVEHSISRSLLEGEIPFPPTS
Purity	> 90% as determined by SDS-PAGE.

 Tel: 1-631-559-9269 1-516-512-3133

 Email: info@creative-biomart.com  Fax: 1-631-938-8127

 45-1 Ramsey Road, Shirley, NY 11967, USA

Notes	Repeated freezing and thawing is not recommended. Store working aliquots at 4 centigrade for up to one week.
Storage	The shelf life is related to many factors, storage state, buffer ingredients, storage temperature and the stability of the protein itself. Generally, the shelf life of liquid form is 6 months at -20 centigrade/-80 centigrade. The shelf life of lyophilized form is 12 months at -20 centigrade/-80 centigrade.
Concentration	A hardcopy of COA with reconstitution instruction is sent along with the products.

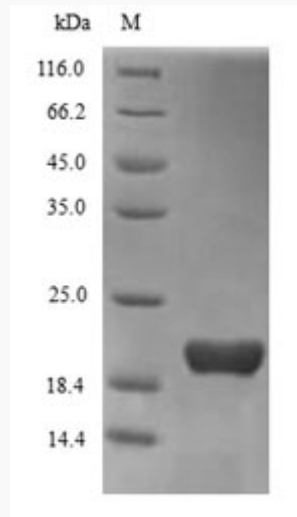
GENE INFORMATION

Gene Name	TREM2 triggering receptor expressed on myeloid cells 2 [Homo sapiens]
Official Symbol	TREM2
Synonyms	TREM2; TREM 2; Trem2a; Trem2b; Trem2c; TREM-2;
Gene ID	54209
mRNA Refseq	NM_018965
Protein Refseq	NP_061838
MIM	605086
UniProt ID	Q9NZC2

 Tel: 1-631-559-9269 1-516-512-3133

 Email: info@creative-biomart.com  Fax: 1-631-938-8127

 45-1 Ramsey Road, Shirley, NY 11967, USA



(Tris-Glycine gel) Discontinuous SDS-PAGE (reduced) with 5% enrichment gel and 15% separation gel.

 Tel: 1-631-559-9269 1-516-512-3133

 Email: info@creative-biomart.com  Fax: 1-631-938-8127

 45-1 Ramsey Road, Shirley, NY 11967, USA