

## Recombinant Human TREM2 protein, His-Avi-tagged, Biotinylated

Cat. No. TREM2-246H Lot. No. (See product label)

### SPECIFICATION

<b>Product Overview</b>	Biotinylated Recombinant Human TREM2 protein(Q9NZC2-1)(His19-Ser174), fused with C-terminal His and Avi tag, was expressed in HEK293.
<b>Species</b>	Human
<b>Source</b>	HEK293
<b>ProteinLength</b>	His19-Ser174
<b>Tag</b>	C-His-Avi
<b>Conjugation/Label</b>	Biotin
<b>Form</b>	Lyophilized from 0.22µm filtered solution in PBS (pH 7.4). Normally 5% trehalose is added as protectant before lyophilization.
<b>Bio-activity</b>	Immobilized Biotinylated Human TREM2, His Tag at 1ug/ml (100ul/Well) on streptavidin (5ug/ml) precoated plate. Dose response curve for Anti-TREM2 Antibody, hFc Tag with the EC50 of 5.8ng/ml determined by ELISA.
<b>Molecular Mass</b>	The protein has a predicted MW of 20.3 kDa. Due to glycosylation, the protein migrates to 30-45 kDa based on Tris-Bis PAGE result.
<b>Endotoxin</b>	Less than 1EU per µg by the LAL method.

 Tel: 1-631-559-9269 1-516-512-3133

 Email: [info@creative-biomart.com](mailto:info@creative-biomart.com)  Fax: 1-631-938-8127

 45-1 Ramsey Road, Shirley, NY 11967, USA

<b>Purity</b>	> 95% as determined by Tris-Bis PAGE
<b>Storage</b>	Reconstituted protein stable at -80°C for 12 months, 4°C for 1 week. Use a manual defrost freezer and avoid repeated freeze-thaw cycles.
<b>Reconstitution</b>	Centrifuge tubes before opening. Reconstituting to a concentration more than 100 µg/ml is recommended. Dissolve the lyophilized protein in distilled water.
<b>Conjugation</b>	Biotin

## GENE INFORMATION

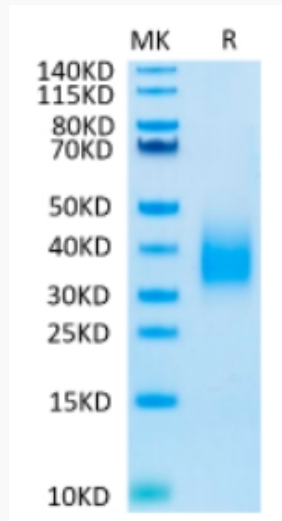
<b>Gene Name</b>	TREM2 triggering receptor expressed on myeloid cells 2 [ Homo sapiens ]
<b>Official Symbol</b>	TREM2
<b>Synonyms</b>	TREM2; triggering receptor expressed on myeloid cells 2; triggering receptor expressed on myeloid cells 2a; TREM 2; Trem2a; Trem2b; Trem2c; triggering receptor expressed on monocytes 2; TREM-2;
<b>Gene ID</b>	54209
<b>mRNA Refseq</b>	NM_018965
<b>Protein Refseq</b>	NP_061838
<b>MIM</b>	605086
<b>UniProt ID</b>	Q9NZC2

 Tel: 1-631-559-9269 1-516-512-3133

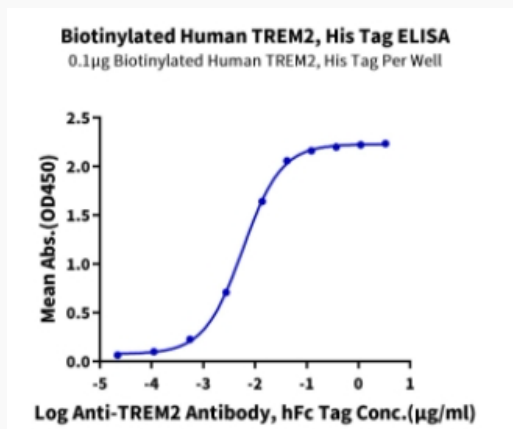
 Email: [info@creative-biomart.com](mailto:info@creative-biomart.com)  Fax: 1-631-938-8127

 45-1 Ramsey Road, Shirley, NY 11967, USA

**Tris-Bis PAGE**



**ELISA Data**



 Tel: 1-631-559-9269 1-516-512-3133

 Email: [info@creative-biomart.com](mailto:info@creative-biomart.com)  Fax: 1-631-938-8127

 45-1 Ramsey Road, Shirley, NY 11967, USA