

Recombinant Human TREM2 Protein, Fc-tagged

Cat. No. TREM2-30H Lot. No. (See product label)

SPECIFICATION

Product Overview Recombinant Human TREM2 Protein, fused to Fc-tag, was expressed in HEK293.

Species Human

Source HEK293

Description This gene encodes a membrane protein that forms a receptor signaling complex with the TYRO protein tyrosine kinase binding protein. The encoded protein functions in immune response and may be involved in chronic inflammation by triggering the production of constitutive inflammatory cytokines. Defects in this gene are a cause of polycystic lipomembranous osteodysplasia with sclerosing leukoencephalopathy (PLOSL). Alternative splicing results in multiple transcript variants encoding different isoforms.

Form 50mM Tris 7.5, 100mM Glycine, 25mM Arginine, 150mM NaCl.

Molecular Mass 43.6 kDa

AA Sequence

```
HNTTVFQGVAGQSLQVSCPYDSMKHWGRHKAWCRQLGEKGPCQRVVSTHNLWL
LSFLRRWNGSTAITDDTLGGTLTITLRNLQPHDAGLYQCQSLHGSEADTLRKVLVEV
LADPLDHRDAGDLWFPGESESFEDAHVEHSISRSLLEGEIPFPPTSEPKSSDKTHTC
PPCPAPEAEGAPSVFLFPPKPKDTLMISRTPEVTCVVVDVSHEDPEVKFNWYVDGV
EVHNAKTKPREEQYNSTYRVVSVLTVLHQDWLNGKEYKCKVSNKALPSSIEKTISKA
KGQPREPQVYTLPPSRDELTKNQVSLTCLVKGFYPSDIAVEWESNGQPENNYKTPP
PVLDSGDGSSFLYSKLTVDKSRWQQGNVFCFSVMHEALHNHYTQKSLSLSPGK
```

 Tel: 1-631-559-9269 1-516-512-3133

 Email: info@creative-biomart.com  Fax: 1-631-938-8127

 45-1 Ramsey Road, Shirley, NY 11967, USA

Purity >95%

Storage

Store it under sterile conditions at -20 to -80 centigrade. It is recommended that the protein be aliquoted for optimal storage. Avoid repeated freeze-thaw cycles.

GENE INFORMATION

Gene Name TREM2 triggering receptor expressed on myeloid cells 2 [Homo sapiens (human)]

Official Symbol TREM2

Synonyms PLOSL2; TREM-2; Trem2a; Trem2b; Trem2c

Gene ID 54209

mRNA Refseq NM_018965

Protein Refseq NP_061838

MIM 605086

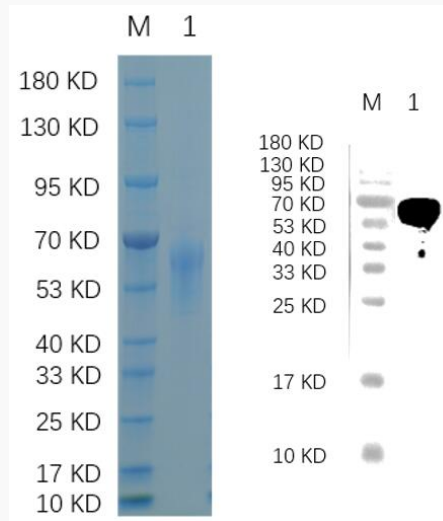
UniProt ID Q9NZC2

 Tel: 1-631-559-9269 1-516-512-3133

 Email: info@creative-biomart.com  Fax: 1-631-938-8127

 45-1 Ramsey Road, Shirley, NY 11967, USA

SDS-PAGE



Reducing 12% SDS-PAGE and WB analysis profile of purified TREM2.

 Tel: 1-631-559-9269 1-516-512-3133

 Email: info@creative-biomart.com  Fax: 1-631-938-8127

 45-1 Ramsey Road, Shirley, NY 11967, USA