

Recombinant Human TREML1 Protein, Myc/DDK-tagged, C13 and N15-labeled

Cat. No. TREML1-1567H **Lot. No.** (See product label)

SPECIFICATION

Product Overview

TREML1 MS Standard C13 and N15-labeled recombinant protein (NP_835468) with a C-terminal MYC/DDK tag, was expressed in HEK293 cells.

Species

Human

Source

HEK293

Description

This gene encodes a member of the triggering receptor expressed on myeloid cells-like (TREM) family. The encoded protein is a type 1 single Ig domain orphan receptor localized to the alpha-granule membranes of platelets. The encoded protein is involved in platelet aggregation, inflammation, and cellular activation and has been linked to Gray platelet syndrome. Alternative splicing results in multiple transcript variants

Molecular Mass

32.5 kDa

AA Sequence

```
MGLTLLLLLLLLGLEGQGIVGSLPEVLQAPVGSSILVQCHYRLQDVKAQKVWCRFLPE
GCQPLVSSAVDRRAPAGRRTFLTDLGGGLLQVEMVTLQEEDAGEYGCMVDGARG
PQILHRVSLNILPPEEEEEETHKIGSLAENAFSDPAGSANPLEPSQDEKSIPLIWGAVLL
VGLLVAAVVLFVMAKRKQGNRLGVCGRFLSSRVSGMNPSSVVHHVSDSGPAAEL
PLDVPHIRLDSPPSFDNTTYTSLPLDSPSGKPSLPAPSSLPPLPPKVLVCSKPVTYAT
VIFPGGNKGGGTSCGPAQNPPNNQTPSSSTRTRPLEQKLISEEDLAANDILDYKDDDD
KV
```

 Tel: 1-631-559-9269 1-516-512-3133

 Email: info@creative-biomart.com  Fax: 1-631-938-8127

 45-1 Ramsey Road, Shirley, NY 11967, USA

Purity	> 80% as determined by SDS-PAGE and Coomassie blue staining
Stability	Stable for 3 months from receipt of products under proper storage and handling conditions.
Storage	Store at -80 centigrade. Avoid repeated freeze-thaw cycles.
Concentration	50 µg/mL as determined by BCA
Storage Buffer	100 mM glycine, 25 mM Tris-HCl, pH 7.3.

GENE INFORMATION

Gene Name	TREML1 triggering receptor expressed on myeloid cells-like 1 [Homo sapiens (human)]
Official Symbol	TREML1
Synonyms	TREML1; triggering receptor expressed on myeloid cells-like 1; trem-like transcript 1 protein; dJ238O23.3; TLT1; TREM like transcript 1; triggering receptor expressed on myeloid cells-like protein 1; TLT-1; PRO3438; GLTL1825; MGC119173;
Gene ID	340205
mRNA Refseq	NM_178174
Protein Refseq	NP_835468
MIM	609714
UniProt ID	Q86YW5

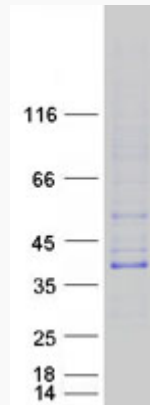
 Tel: 1-631-559-9269 1-516-512-3133

 Email: info@creative-biomart.com  Fax: 1-631-938-8127

 45-1 Ramsey Road, Shirley, NY 11967, USA



SDS-PAGE



Tel: 1-631-559-9269 1-516-512-3133

Email: info@creative-biomart.com Fax: 1-631-938-8127

45-1 Ramsey Road, Shirley, NY 11967, USA