

Recombinant Human TREX1 Protein (Met1-Thr236), N-His tagged

Cat. No. TREX1-5592H Lot. No. (See product label)

SPECIFICATION

Product Overview	Recombinant human TREX1 (Met1-Thr236) fused with the N-His tag was expressed in E. coli.
Species	Human
Source	E.coli
ProteinLength	Met1-Thr236
Form	Lyophilized powder/frozen liquid
Molecular Mass	27.64 kDa
Purity	> 90 % as determined by SDS-PAGE
Notes	For research use only.
Storage	Use a manual defrost freezer and avoid repeated freeze thaw cycles. Store at 2 to 8 centigrade for one week. Store at -20 to -80 centigrade for twelve months from the date of receipt.
Storage Buffer	0.01M PBS, pH 7.4, 0.02 % NLS
Reconstitution	Reconstitute in sterile water for a stock solution.

 Tel: 1-631-559-9269 1-516-512-3133

 Email: info@creative-biomart.com  Fax: 1-631-938-8127

 45-1 Ramsey Road, Shirley, NY 11967, USA

Shipping They are shipped out with dry ice/blue ice unless customers require otherwise.

GENE INFORMATION

Gene Name TREX1 three prime repair exonuclease 1 [Homo sapiens (human)]

Official Symbol TREX1

Synonyms TREX1; three prime repair exonuclease 1; AGS1, Aicardi Goutieres syndrome 1; DRN3; DNase III; 3 repair exonuclease 1; 3-5 exonuclease TREX1; CRV; AGS1; HERNS; DKFZp434J0310;

Gene ID 11277

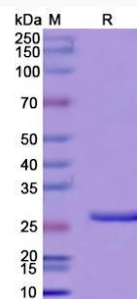
mRNA Refseq NM_016381

Protein Refseq NP_057465

MIM 606609

UniProt ID Q9NSU2

SDS-PAGE



 Tel: 1-631-559-9269 1-516-512-3133

 Email: info@creative-biomart.com  Fax: 1-631-938-8127

 45-1 Ramsey Road, Shirley, NY 11967, USA