

# Recombinant Human TRH Protein, Myc/DDK-tagged, C13 and N15-labeled

**Cat. No.** TRH-2186H    **Lot. No.** (See product label)

## SPECIFICATION

<b>Product Overview</b>	TRH MS Standard C13 and N15-labeled recombinant protein (NP_009048) with a C-terminal MYC/DDK tag, was expressed in HEK293 cells.
<b>Species</b>	Human
<b>Source</b>	HEK293
<b>Description</b>	This gene encodes a member of the thyrotropin-releasing hormone family. Cleavage of the encoded proprotein releases mature thyrotropin-releasing hormone, which is a tripeptide hypothalamic regulatory hormone. The human proprotein contains six thyrotropin-releasing hormone tripeptides. Thyrotropin-releasing hormone is involved in the regulation and release of thyroid-stimulating hormone, as well as prolactin. Deficiency of this hormone has been associated with hypothalamic hypothyroidism.
<b>Molecular Mass</b>	27.4 kDa
<b>AA Sequence</b>	MPGPWLLLALALTLNLTGVPGGRAQPEAAQQEAVTAAEHPGLDDFLRQVERLLFLR ENIQRLLQGDQGEHSASQIFQSDWLSKRQHPGKREEEEEEGVEEEEEEGGAVGPH KRQHPGRREDEASWSVDVTQHKRQHPGRRSPWLAYAVPKRQHPGRRRLADPKAQ RSWEEEEEEEEEREEDLMPEKRQHPGKRALGGPCGPQGAYGQAGLLLGLLDDLSRS QGAEKQRQHPGRRAAWVREPLEETRTRPLEQKLISEEDLAANDILDYKDDDDKV
<b>Purity</b>	> 80% as determined by SDS-PAGE and Coomassie blue staining

 Tel: 1-631-559-9269    1-516-512-3133

 Email: [info@creative-biomart.com](mailto:info@creative-biomart.com)     Fax: 1-631-938-8127

 45-1 Ramsey Road, Shirley, NY 11967, USA

<b>Stability</b>	Stable for 3 months from receipt of products under proper storage and handling conditions.
<b>Storage</b>	Store at -80 centigrade. Avoid repeated freeze-thaw cycles.
<b>Concentration</b>	50 µg/mL as determined by BCA
<b>Storage Buffer</b>	100 mM glycine, 25 mM Tris-HCl, pH 7.3.

## GENE INFORMATION

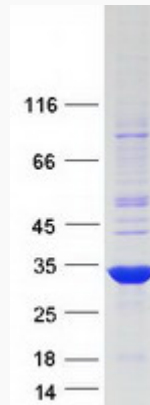
<b>Gene Name</b>	TRH thyrotropin-releasing hormone [ Homo sapiens (human) ]
<b>Official Symbol</b>	TRH
<b>Synonyms</b>	TRH; thyrotropin-releasing hormone; prothyroliberin; MGC125964; MGC125965;
<b>Gene ID</b>	7200
<b>mRNA Refseq</b>	NM_007117
<b>Protein Refseq</b>	NP_009048
<b>MIM</b>	613879
<b>UniProt ID</b>	P20396

 Tel: 1-631-559-9269 1-516-512-3133

 Email: [info@creative-biomart.com](mailto:info@creative-biomart.com)  Fax: 1-631-938-8127

 45-1 Ramsey Road, Shirley, NY 11967, USA

**SDS-PAGE**



 Tel: 1-631-559-9269 1-516-512-3133

 Email: [info@creative-biomart.com](mailto:info@creative-biomart.com)  Fax: 1-631-938-8127

 45-1 Ramsey Road, Shirley, NY 11967, USA