

Active Recombinant Full Length Human TRH Protein, C-Flag-tagged

Cat. No. TRH-368HFL **Lot. No.** (See product label)

SPECIFICATION

Product Overview	Recombinant Full Length Human TRH Protein, fused to Flag-tag at C-terminus, was expressed in Mammalian cells.
Species	Human
Source	Mammalian Cells
Description	This gene encodes a member of the thyrotropin-releasing hormone family. Cleavage of the encoded proprotein releases mature thyrotropin-releasing hormone, which is a tripeptide hypothalamic regulatory hormone. The human proprotein contains six thyrotropin-releasing hormone tripeptides. Thyrotropin-releasing hormone is involved in the regulation and release of thyroid-stimulating hormone, as well as prolactin. Deficiency of this hormone has been associated with hypothalamic hypothyroidism.
Form	25 mM Tris HCl, pH 7.3, 100 mM glycine, 10% glycerol.
Bio-activity	Cell treatment
Molecular Mass	27.2 kDa
AA Sequence	MPGPWLLLALALTLNLTGVPGGRAQPEAAQQEAVTAAEHPGLDDFLRQVERLLFLR ENIQRLQGDQGEHS ASQIFQSDWLSKRQHHPGKREEEEEEGVEEEEEEGGAVGP HKRQHHPGRREDEASWSVDVTQHKRQHHPGRR SPWLAYAVPKRQHHPGRRRLADPKA QRSWEEEEEEEEEREEDLMPEKRQHHPGKRALGGPCGPQGAYGQAGLLL

 Tel: 1-631-559-9269 1-516-512-3133

 Email: info@creative-biomart.com  Fax: 1-631-938-8127

 45-1 Ramsey Road, Shirley, NY 11967, USA

GLLDDLRSRSGAEEKRQHPGRRAAWVREPLEETRTRPLEQKLISEEDLAANDILDYK
DDDDKV

Purity > 80% as determined by SDS-PAGE and Coomassie blue staining.

Stability Stable for 12 months from the date of receipt of the product under proper storage and handling conditions. Avoid repeated freeze-thaw cycles.

Storage Store at -80 centigrade.

Concentration >50 ug/mL as determined by microplate BCA method.

Preparation Recombinant protein was captured through anti-DDK affinity column followed by conventional chromatography steps.

Protein Families Druggable Genome, Secreted Protein

Full Length Full L.

GENE INFORMATION

Gene Name [TRH thyrotropin releasing hormone \[Homo sapiens \(human\) \]](#)

Official Symbol [TRH](#)

Synonyms TRF; Pro-TRH

Gene ID [7200](#)

mRNA Refseq [NM_007117.5](#)

 Tel: 1-631-559-9269 1-516-512-3133

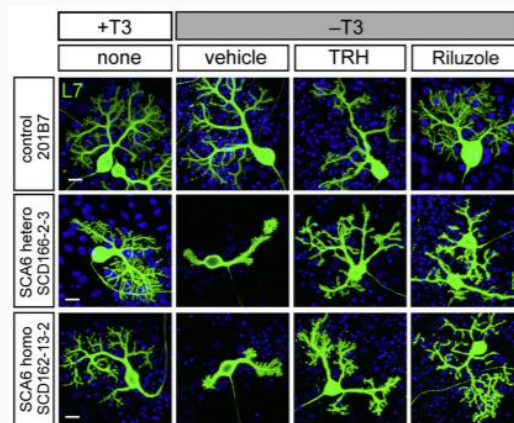
 Email: info@creative-biomart.com  Fax: 1-631-938-8127

 45-1 Ramsey Road, Shirley, NY 11967, USA

Protein Refseq NP_009048.1

MIM 613879

UniProt ID P20396

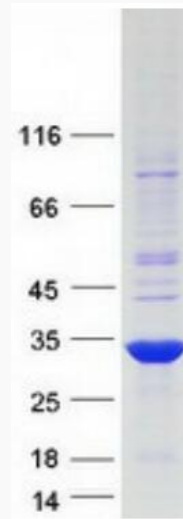


TRH enhances the survival and dendritic maintenance of SCA6 Purkinje cells. Highmagnification images are L7+ Purkinje cells in green derived from control, heterozygous, and homozygous iPSCs on culture day 75 in the presence or absence of T3 and with or without TRH1 or Riluzole. The scale bars represent 20 um.

 Tel: 1-631-559-9269 1-516-512-3133

 Email: info@creative-biomart.com  Fax: 1-631-938-8127

 45-1 Ramsey Road, Shirley, NY 11967, USA



Coomassie blue staining of purified TRH protein.

 Tel: 1-631-559-9269 1-516-512-3133

 Email: info@creative-biomart.com  Fax: 1-631-938-8127

 45-1 Ramsey Road, Shirley, NY 11967, USA