

Recombinant Human TRIB1 protein, His-tagged

Cat. No. TRIB1-5744H Lot. No. (See product label)

SPECIFICATION

Product Overview	Recombinant Human TRIB1 protein(1-150 aa), fused with N-terminal His tag, was expressed in E. coli.
Species	Human
Source	E. coli
ProteinLength	1-150 aa
Form	The purified protein was lyophilized from sterile phosphate-buffered saline (PBS: 58 mM Na ₂ HPO ₄ , 17 mM NaH ₂ PO ₄ , 68 mM NaCl, pH 7.4). Prior to lyophilization, 5% (w/v) trehalose and 5% (w/v) mannitol were incorporated as cryoprotective excipients. The protein was eluted with a buffer containing 300 mM imidazole.
AASequence	MRVGPVRSAMSGASQPRGPALLFPATRGVPAKRLLDADDAAAVAAKCPRLSECSS PPDYLSPPGSPCSPQPPPAAPGAGGGSGSAPGPSRIADYLLLPLAEREHVSRALCIH TGRELRCVKVFIKHYQDKIRPYIQLPSHSNITGIVEVI
Purity	85%, by SDS-PAGE.
Storage	Store at 2-8°C for 1-2 weeks. Aliquot and store at -20°C to -80°C for up to 3 months, reconstitution with sterile water and addition of an equal volume of glycerol. Avoid repeat freeze-thaw cycles.
Reconstitution	It is recommended that sterile water be added to the vial to prepare a stock solution of

 Tel: 1-631-559-9269 1-516-512-3133

 Email: info@creative-biomart.com  Fax: 1-631-938-8127

 45-1 Ramsey Road, Shirley, NY 11967, USA

0.25 ug/ul. Centrifuge the vial at 4°C before opening to recover the entire contents.

GENE INFORMATION

Gene Name	TRIB1 tribbles homolog 1 (Drosophila) [Homo sapiens]
Official Symbol	TRIB1
Synonyms	TRIB1; tribbles homolog 1 (Drosophila); tribbles homolog 1; C8FW; GIG2; TRB1; GIG-2; TRB-1; tribbles-like protein 1; G-protein-coupled receptor induced protein; G-protein-coupled receptor-induced protein 2; phosphoprotein regulated by mitogenic pathways; G-protein-coupled receptor-induced gene 2 protein; SKIP1;
mRNA Refseq	NM_025195
Protein Refseq	NP_079471
MIM	609461
UniProt ID	Q96RU8
Gene ID	10221

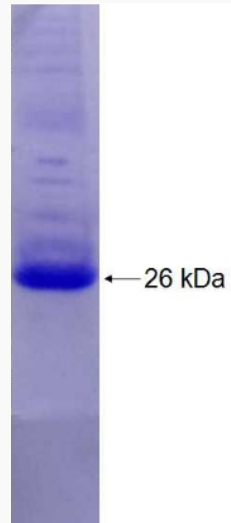
 Tel: 1-631-559-9269 1-516-512-3133

 Email: info@creative-biomart.com  Fax: 1-631-938-8127

 45-1 Ramsey Road, Shirley, NY 11967, USA



SDS-PAGE



☎ Tel: 1-631-559-9269 1-516-512-3133

☎ Email: info@creative-biomart.com ☎ Fax: 1-631-938-8127

☎ 45-1 Ramsey Road, Shirley, NY 11967, USA