

# Recombinant Full Length Human TRIB2 Protein, C-Flag-tagged

Cat. No. TRIB2-1626HFL Lot. No. (See product label)

## SPECIFICATION

<b>Product Overview</b>	Recombinant Full Length Human TRIB2 Protein, fused to Flag-tag at C-terminus, was expressed in Mammalian cells.
<b>Species</b>	Human
<b>Source</b>	Mammalian Cells
<b>Description</b>	<p>This gene encodes one of three members of the Tribbles family. The Tribbles members share a Trb domain, which is homologous to protein serine-threonine kinases, but lacks the active site lysine and probably lacks a catalytic function. The Tribbles proteins interact and modulate the activity of signal transduction pathways in a number of physiological and pathological processes. This Tribbles member induces apoptosis of cells mainly of the hematopoietic origin. It has been identified as a protein up-regulated by inflammatory stimuli in myeloid (THP-1) cells, and also as an oncogene that inactivates the transcription factor C/EBPalpha (CCAAT/enhancer-binding protein alpha) and causes acute myelogenous leukemia. Alternatively spliced transcript variants have been found for this gene.</p>
<b>Form</b>	25 mM Tris HCl, pH 7.3, 100 mM glycine, 10% glycerol.
<b>Molecular Mass</b>	38.6 kDa
<b>AA Sequence</b>	<p>MNIHRSTPITIARYGRSRNKTQDFEELSSIRSAEPSQSFSPNLGSPSPPETPNLSHCV            SCIGKYLLLEPL EGDHVFRAVHLHSGEELVCKVFDISCYQESLAPCFCLSAHSNINQI            TEIILGETKAYVFFERSYGDMHSF VRTCKKLRREEEAARLFYQIASAVAHC HDGGLVL</p>

 Tel: 1-631-559-9269 1-516-512-3133

 Email: [info@creative-biomart.com](mailto:info@creative-biomart.com)  Fax: 1-631-938-8127

 45-1 Ramsey Road, Shirley, NY 11967, USA

RDLKLRKFIFKDEERTRVKLESLEDAYILRGDDDSL DKHGCPAYVSPEILNTSGSYS  
 GKAADVWSLGVMLYTMLVGRYPFHDI EPSSLFSKIRRGQFNIPETLSPK  
 AKCLIRSILRREPSERLTSQEILDHPWFSTDFSVNSAYGAKEVSDQLVPDVNMEEN  
 LDPFFNTRTRPLEQKLISEEDLAANDILDYKDDDDKV

**Purity** > 80% as determined by SDS-PAGE and Coomassie blue staining.

**Stability** Stable for 12 months from the date of receipt of the product under proper storage and handling conditions. Avoid repeated freeze-thaw cycles.

**Storage** Store at -80 centigrade.

**Concentration** >50 ug/mL as determined by microplate BCA method.

**Preparation** Recombinant protein was captured through anti-DDK affinity column followed by conventional chromatography steps.

**Protein Families** Druggable Genome, Protein Kinase

**Full Length** Full L.

## GENE INFORMATION

**Gene Name** [TRIB2 tribbles pseudokinase 2 \[ Homo sapiens \(human\) \]](#)

**Official Symbol** [TRIB2](#)

**Synonyms** C5FW; TRB2; GS3955

**Gene ID** [28951](#)

 Tel: 1-631-559-9269 1-516-512-3133

 Email: [info@creative-biomart.com](mailto:info@creative-biomart.com)  Fax: 1-631-938-8127

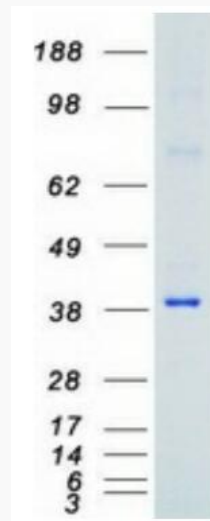
 45-1 Ramsey Road, Shirley, NY 11967, USA

mRNA Refseq [NM\\_021643.4](#)

Protein Refseq [NP\\_067675.1](#)

MIM [609462](#)

UniProt ID [Q92519](#)



Coomassie blue staining of purified TRIB2 protein.

 Tel: 1-631-559-9269 1-516-512-3133

 Email: [info@creative-biomart.com](mailto:info@creative-biomart.com)  Fax: 1-631-938-8127

 45-1 Ramsey Road, Shirley, NY 11967, USA