

Recombinant Human TRIB3 protein, GST-tagged

Cat. No. TRIB3-3073H Lot. No. (See product label)

SPECIFICATION

Product Overview	Recombinant Human TRIB3 protein(NP_066981.2) (Met 1-Gly 358) was expressed in Insect Cells, fused with the GST tag at N-terminus.
Species	Human
Source	Insect Cells
ProteinLength	1-358 aa
Form	Lyophilized from sterile 50mM Tris, 100mM NaCl, pH 8.0, 0.5mM Reduced Glutathione, 10% gly, 0.5mM PMSF.
Molecular Mass	The recombinant human TRIB3/GST chimera consists of 582 amino acids and predicts a molecular mass of 65.8 kDa as estimated in SDS-PAGE under reducing conditions.
Endotoxin	< 1.0 EU per µg of the protein as determined by the LAL method.
Purity	> 90 % as determined by SDS-PAGE
Storage	Store it under sterile conditions at -20°C to -80°C upon receiving. Recommend to aliquot the protein into smaller quantities for optimal storage. Avoid repeated freeze-thaw cycles.
Reconstitution	It is recommended that sterile water be added to the vial to prepare a stock solution of

 Tel: 1-631-559-9269 1-516-512-3133

 Email: info@creative-biomart.com  Fax: 1-631-938-8127

 45-1 Ramsey Road, Shirley, NY 11967, USA

0.2 ug/ul. Centrifuge the vial at 4°C before opening to recover the entire contents.

GENE INFORMATION

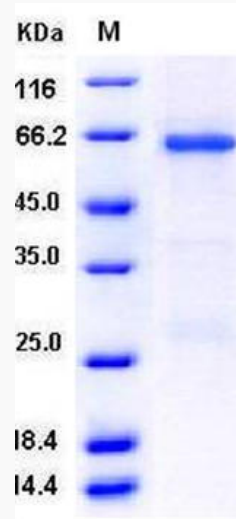
Gene Name	TRIB3 tribbles homolog 3 (Drosophila) [Homo sapiens]
Official Symbol	TRIB3
Synonyms	TRIB3; tribbles homolog 3 (Drosophila); C20orf97, chromosome 20 open reading frame 97; tribbles homolog 3; dJ1103G7.3; TRB3; TRB-3; p65-interacting inhibitor of NF-kappaB; p65-interacting inhibitor of NF-kappa-B; neuronal cell death inducible putative kinase; neuronal cell death-inducible putative kinase; NIPK; SINK; SKIP3; C20orf97;
Gene ID	57761
mRNA Refseq	NM_021158
Protein Refseq	NP_066981
MIM	607898
UniProt ID	Q96RU7

 Tel: 1-631-559-9269 1-516-512-3133

 Email: info@creative-biomart.com  Fax: 1-631-938-8127

 45-1 Ramsey Road, Shirley, NY 11967, USA

SDS-PAGE



 Tel: 1-631-559-9269 1-516-512-3133

 Email: info@creative-biomart.com  Fax: 1-631-938-8127

 45-1 Ramsey Road, Shirley, NY 11967, USA