

## Recombinant Human TRIM21 protein, His-tagged

Cat. No. TRIM21-4644H Lot. No. (See product label)

### SPECIFICATION

<b>Product Overview</b>	Recombinant Human TRIM21 protein(P19474)(1-475aa), fused with C-terminal His tag, was expressed in Insect cells.
<b>Species</b>	Human
<b>Source</b>	Insect cells
<b>ProteinLength</b>	1-475aa
<b>Tag</b>	C-His
<b>Form</b>	If the delivery form is liquid, the default storage buffer is Tris/PBS-based buffer, 5%-50% glycerol. If the delivery form is lyophilized powder, the buffer before lyophilization is Tris/PBS-based buffer, 6% Trehalose, pH 8.0.
<b>Molecular Mass</b>	57.7 kDa
<b>Purity</b>	Greater than 90% as determined by SDS-PAGE. Greater than 90% as determined by SEC-HPLC.
<b>Storage</b>	Store at -20°C/-80°C upon receipt, aliquoting is necessary for mutiple use. Avoid repeated freeze-thaw cycles.
<b>Reconstitution</b>	We recommend that this vial be briefly centrifuged prior to opening to bring the contents to the bottom. Please reconstitute protein in deionized sterile water to a

 Tel: 1-631-559-9269 1-516-512-3133

 Email: [info@creative-biomart.com](mailto:info@creative-biomart.com)  Fax: 1-631-938-8127

 45-1 Ramsey Road, Shirley, NY 11967, USA

concentration of 0.1-1.0 mg/mL. We recommend to add 5-50% of glycerol (final concentration) and aliquot for long-term storage at -20°C/-80°C.

**AA Sequence**

```
MASAARLTMMWEEVTCPICLDPFVEPVSIIECGHSFCQECISQVVGKGGGSVCPVCRQ
RFLLNLRPNRQLANMVNNLKEISQEAREGTQGGERCAVHGERLHLFCEKDGKALC
WVCAQSRKHRDHAMVPLEEAAQEYQEKLQVALGELRRKQELAIEKLEVEIAIKRADW
KKTVETQKSRIHAEFVQQKNFLVEEEQRQLQELEKDEREQLRILGEKEAKLAQQSQA
LQELISELDRRCHSSALELLQEVIIVLERSSESWNLKDLDTSPELRSVCHVPGLKMLR
TCAVHITLDPDTANPWLILSEDRRQVRLGDTQQSIPGNEERFDSYPMVLGAQHFHS
GKHYWEVDVTGKEAWDLGVCRDSVRRKGFLLSSKSGFWTIWLWNKQKYEAGTY
PQTPLHLQVPPCQVGFILDYEAGMVSFYNITDHGSLIYSFSECAFTGPLRPFSPGFN
DGGKNTAPLTLCLPLNIGSQGSTDY
```

## GENE INFORMATION

**Gene Name** [TRIM21 tripartite motif containing 21 \[ Homo sapiens \]](#)

**Official Symbol** [TRIM21](#)

**Synonyms**

TRIM21; tripartite motif containing 21; Sjogren syndrome antigen A1 (52kDa, ribonucleoprotein autoantigen SS A/Ro) , SSA1, tripartite motif containing 21; E3 ubiquitin-protein ligase TRIM21; RNF81; RO52; SS-A; ro(SS-A); 52 kDa Ro protein; RING finger protein 81; Sicca syndrome antigen A; tripartite motif-containing 21; sjogren syndrome type A antigen; tripartite motif-containing protein 21; 52 kDa ribonucleoprotein autoantigen Ro/SS-A; Sjogren syndrome antigen A1 (52kDa, ribonucleoprotein autoantigen SS-A/Ro); SSA; SSA1;

**Gene ID** [6737](#)

**mRNA Refseq** [NM\\_003141](#)

 Tel: 1-631-559-9269 1-516-512-3133

 Email: [info@creative-biomart.com](mailto:info@creative-biomart.com)  Fax: 1-631-938-8127

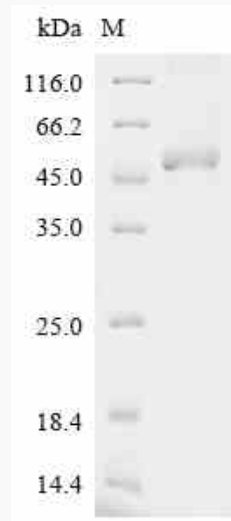
 45-1 Ramsey Road, Shirley, NY 11967, USA

**Protein Refseq** NP\_003132

**MIM** 109092

**UniProt ID** P19474

**SDS-PAGE**



 Tel: 1-631-559-9269 1-516-512-3133

 Email: [info@creative-biomart.com](mailto:info@creative-biomart.com)  Fax: 1-631-938-8127

 45-1 Ramsey Road, Shirley, NY 11967, USA