

## Recombinant Human TRIM21 protein, His-tagged

Cat. No. TRIM21-4729H Lot. No. (See product label)

### SPECIFICATION

**Product Overview** Recombinant Human TRIM21 protein(P19474)(1-475 aa), fused with N-terminal His tag, was expressed in Yeast.

**Species** Human

**Source** Yeast

**ProteinLength** 1-475 aa

**Form** For liquid formulations, the standard storage buffer consists of a Tris or PBS based solution supplemented with 5-50% glycerol. When provided as lyophilized powder, the product undergoes freeze-drying from a Tris- or PBS-based formulation containing 6% trehalose, adjusted to pH 8.0 prior to the lyophilization process.

**Molecular Mass** 56.2kDa

**AASequence**

```
MASAARLTMMWEEVTCPICLDPFVEPVSIIECGHSFCQECISQVVGKGGGSVCPVCRQ
RFLLNLRPNRQLANMVNNLKEISQEAREGTQGERCAVHGERLHLFCEKDGKALC
WVCAQSRKHRDHAMVPLEEAAQEYQEKLQVALGELRRKQELAIEKLEVEIAIKRADW
KKTVETQKSRIHAEFVQKQNFVVEEQRQLQELEKDEREQLRILGEKEAKLAQQSQA
LQELISELDRRCHSSALELLQEVIVLSESWNLKDLITSPELRSVCHVPGLKMLR
TCAVHITLDPDTANPWLILSEDRRQVRLGDTQQSIPGNEERFDSYPMVLGAQHFHS
GKHYWEVDVTGKEAWDLGVCRRDSVRRKGFLLSSKSGFWTIWLWNKQKYEAGTY
PQTPLHLQVPPCQVGFILDYEAGMVSFYNITDHGSLIYSFSECAFTGPLRPFSPGFN
DGGKNTAPLTLCLNIGSQGSTDY
```

 Tel: 1-631-559-9269 1-516-512-3133

 Email: [info@creative-biomart.com](mailto:info@creative-biomart.com)  Fax: 1-631-938-8127

 45-1 Ramsey Road, Shirley, NY 11967, USA

<b>Purity</b>	Greater than 90% as determined by SDS-PAGE.
<b>Storage</b>	Store at -20°C/-80°C upon receipt, aliquoting is necessary for mutiple use. Avoid repeated freeze-thaw cycles.
<b>Reconstitution</b>	Please reconstitute protein indeionized sterile water to a concentration of 0.1-1.0 mg/mL. Aliquot for long-term storage at -80°C.

## GENE INFORMATION

<b>Gene Name</b>	TRIM21 tripartite motif containing 21 [ Homo sapiens ]
<b>Official Symbol</b>	TRIM21
<b>Synonyms</b>	TRIM21; tripartite motif containing 21; Sjogren syndrome antigen A1 (52kDa, ribonucleoprotein autoantigen SS A/Ro) , SSA1, tripartite motif containing 21; E3 ubiquitin-protein ligase TRIM21; RNF81; RO52; SS-A; ro(SS-A); 52 kDa Ro protein; RING finger protein 81; Sicca syndrome antigen A; tripartite motif-containing 21; sjogren syndrome type A antigen; tripartite motif-containing protein 21; 52 kDa ribonucleoprotein autoantigen Ro/SS-A; Sjogren syndrome antigen A1 (52kDa, ribonucleoprotein autoantigen SS-A/Ro); SSA; SSA1;
<b>Gene ID</b>	6737
<b>mRNA Refseq</b>	NM_003141
<b>Protein Refseq</b>	NP_003132
<b>MIM</b>	109092
<b>UniProt ID</b>	P19474

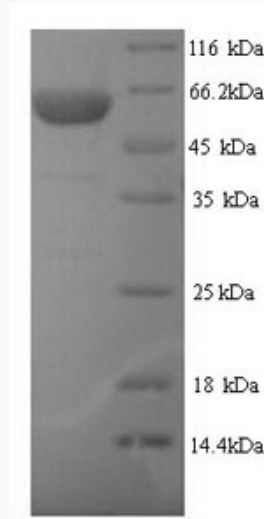
 Tel: 1-631-559-9269 1-516-512-3133

 Email: [info@creative-biomart.com](mailto:info@creative-biomart.com)  Fax: 1-631-938-8127

 45-1 Ramsey Road, Shirley, NY 11967, USA



**SDS-PAGE**



Tel: 1-631-559-9269 1-516-512-3133

Email: [info@creative-biomart.com](mailto:info@creative-biomart.com) Fax: 1-631-938-8127

45-1 Ramsey Road, Shirley, NY 11967, USA