

## Recombinant Human TRIM21 Protein, His-tagged

Cat. No. TRIM21-543H Lot. No. (See product label)

### SPECIFICATION

<b>Product Overview</b>	Recombinant Human TRIM21 protein (Glu268~Leu465) was expressed in E. coli with N-terminal His Tag.
<b>Species</b>	Human
<b>Source</b>	E.coli
<b>ProteinLength</b>	268-465 a.a.
<b>Form</b>	PBS, pH7.4, containing 0.01% SKL, 1mM DTT, 5% Trehalose and Proclin300.
<b>Molecular Mass</b>	26.1kDa
<b>Purity</b>	> 95%
<b>Applications</b>	Positive Control; Immunogen; SDS-PAGE; WB
<b>Storage</b>	Avoid repeated freeze/thaw cycles. Store at 2-8 centigrade for one month. Aliquot and store at -80 centigrade for 12 months.

### GENE INFORMATION

<b>Gene Name</b>	TRIM21 tripartite motif containing 21 [ Homo sapiens (human) ]
<b>Official Symbol</b>	TRIM21

 Tel: 1-631-559-9269 1-516-512-3133

 Email: [info@creative-biomart.com](mailto:info@creative-biomart.com)  Fax: 1-631-938-8127

 45-1 Ramsey Road, Shirley, NY 11967, USA

**Synonyms** TRIM21; SSA; RO52; SSA1; RNF81; tripartite motif containing 21; E3 ubiquitin-protein ligase TRIM21; SS-A; ro(SS-A); 52 kDa Ro protein; RING finger protein 81; Sicca syndrome antigen A; tripartite motif-containing 21; sjogren syndrome type A antigen; tripartite motif-containing protein 21; 52 kDa ribonucleoprotein autoantigen Ro/SS-A; Sjogren syndrome antigen A1 (52kDa, ribonucleoprotein autoantigen SS-A/Ro)

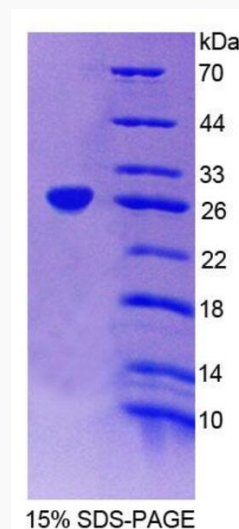
**Gene ID** 6737

**mRNA Refseq** NM\_003141

**Protein Refseq** NP\_003132

**MIM** 109092

**UniProt ID** P19474



Tel: 1-631-559-9269 1-516-512-3133

Email: [info@creative-biomart.com](mailto:info@creative-biomart.com) Fax: 1-631-938-8127

45-1 Ramsey Road, Shirley, NY 11967, USA