

Recombinant Full Length Human TRIM21 protein, His-tagged

Cat. No. TRIM21-5540H Lot. No. (See product label)

SPECIFICATION

Product Overview	Recombinant Human TRIM21 protein(P19474)(1-475aa), fused to N-terminal His tag, was expressed in Yeast.
Species	Human
Source	Yeast
ProteinLength	1-475aa
Form	If the delivery form is liquid, the default storage buffer is Tris/PBS-based buffer, 5%-50% glycerol. If the delivery form is lyophilized powder, the buffer before lyophilization is Tris/PBS-based buffer, 6% Trehalose, pH 8.0.
Molecular Mass	56.2 kDa
Purity	Greater than 90% as determined by SDS-PAGE.
Storage	Store at -20°C/-80°C upon receipt, aliquoting is necessary for mutiple use. Avoid repeated freeze-thaw cycles.
Reconstitution	Please reconstitute protein in deionized sterile water to a concentration of 0.1-1.0 mg/mL. We recommend to add 5-50% of glycerol (final concentration) and aliquot for long-term storage at -20°C/-80°C. Our default final concentration of glycerol is 50%.

GENE INFORMATION

 Tel: 1-631-559-9269 1-516-512-3133

 Email: info@creative-biomart.com  Fax: 1-631-938-8127

 45-1 Ramsey Road, Shirley, NY 11967, USA

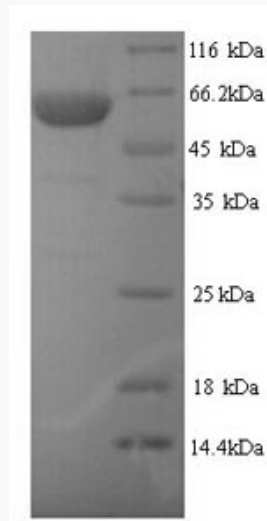
Gene Name	TRIM21 tripartite motif containing 21 [Homo sapiens]
Official Symbol	TRIM21
Synonyms	TRIM21; tripartite motif containing 21; Sjogren syndrome antigen A1 (52kDa, ribonucleoprotein autoantigen SS A/Ro) , SSA1, tripartite motif containing 21; E3 ubiquitin-protein ligase TRIM21; RNF81; RO52; SS-A; ro(SS-A); 52 kDa Ro protein; RING finger protein 81; Sicca syndrome antigen A; tripartite motif-containing 21; sjogren syndrome type A antigen; tripartite motif-containing protein 21; 52 kDa ribonucleoprotein autoantigen Ro/SS-A; Sjogren syndrome antigen A1 (52kDa, ribonucleoprotein autoantigen SS-A/Ro); SSA; SSA1;
Gene ID	6737
mRNA Refseq	NM_003141
Protein Refseq	NP_003132
MIM	109092
UniProt ID	P19474

 Tel: 1-631-559-9269 1-516-512-3133

 Email: info@creative-biomart.com  Fax: 1-631-938-8127

 45-1 Ramsey Road, Shirley, NY 11967, USA

SDS-PAGE



 Tel: 1-631-559-9269 1-516-512-3133

 Email: info@creative-biomart.com  Fax: 1-631-938-8127

 45-1 Ramsey Road, Shirley, NY 11967, USA