

# Recombinant Full Length Human TRIM28 Protein, C-Flag-tagged

**Cat. No.** TRIM28-218HFL    **Lot. No.** (See product label)

## SPECIFICATION

<b>Product Overview</b>	Recombinant Full Length Human TRIM28 Protein, fused to Flag-tag at C-terminus, was expressed in Mammalian cells.
<b>Species</b>	Human
<b>Source</b>	Mammalian Cells
<b>Description</b>	<p>The protein encoded by this gene mediates transcriptional control by interaction with the Kruppel-associated box repression domain found in many transcription factors.</p> <p>The protein localizes to the nucleus and is thought to associate with specific chromatin regions. The protein is a member of the tripartite motif family. This tripartite motif includes three zinc-binding domains, a RING, a B-box type 1 and a B-box type 2, and a coiled-coil region.</p>
<b>Form</b>	25 mM Tris HCl, pH 7.3, 100 mM glycine, 10% glycerol.
<b>Molecular Mass</b>	88.4 kDa
<b>AA Sequence</b>	<pre> MAASAAAASAAAASAASGSPGPGEGSAGGEKRSTAPSAAAASASASAAASSPAGGG AEALELLEHCGVCRE RLRPEREPRLLPCLHSACSACLGPAAPAAAANSSGDGGAAG DGTVVDCPVCKQQCFKDIVENYFMRDSGS KAATDAQDANQCCTSCEDNAPATSY CVECSEPLCETCVEAHQRVKYTKDHTVRSTGPAKSRDGERTVYCN VHKHEPLVLF CESCDTLTCRDCQLNAHKDHQYQFLEDAVRNQRKLLASLVKRLGDKHATLQKSTKE VRSS IRQVSDVQKRVQVDVKMAILQIMKELNKRGRVVLVNDAAQKVTEGQQRERLQ           </pre>

 Tel: 1-631-559-9269    1-516-512-3133

 Email: [info@creative-biomart.com](mailto:info@creative-biomart.com)     Fax: 1-631-938-8127

 45-1 Ramsey Road, Shirley, NY 11967, USA

HWTMTKIQKHQEHILRFAS WALESNNNTALLLSKKLIYFQLHRALKMIVDPVEPHGE  
 MKFQWDLNAWTKSAEAFGKIVAERPSTNSTGP APMAPPAPGPLSKQSGSSSQP  
 MEVQEGYGFSGDDPYSSAEPHVSGVKRSRSGEGEVSGLMRKVPRVSL ERLDLD  
 LTADSQPPVFKVFPSTTEDYNLIVIERGAAAAATGQPGTAPAGTPGAPPLAGMAIV  
 KEEETEA AIGAPPTATEGPETKPVLMALAEGPGAEGPRLASPSGSTSSGLEVVAPE  
 GTSAPGGGPGTLDDSATICRV CQKPGDLVMCNQCEFCFHLDPALQDVPGEE  
 WSCSLCHVLPDLKEEDGSLSLDGADSTGVVAKLSPAN QRKCERVLLALFCHEPCR  
 PLHQLATDSTFSLDQPGGTLTLIRARLQEKLSPPYSSPQEFAQDVGRMFK QFNK  
 LTEDKADVQSIIGLQRFETRMNEAFGDTKFSVAVLVEPPPMSLPGAGLSSQELSGGP  
 GDGPTRTRPLEQKLISEEDLAANDILDYKDDDDKV

<b>Purity</b>	> 80% as determined by SDS-PAGE and Coomassie blue staining.
<b>Stability</b>	Stable for 12 months from the date of receipt of the product under proper storage and handling conditions. Avoid repeated freeze-thaw cycles.
<b>Storage</b>	Store at -80 centigrade.
<b>Concentration</b>	>50 ug/mL as determined by microplate BCA method.
<b>Preparation</b>	Recombinant protein was captured through anti-DDK affinity column followed by conventional chromatography steps.
<b>Protein Families</b>	Protein Kinase, Stem cell - Pluripotency, Transcription Factors
<b>Full Length</b>	Full L.

## GENE INFORMATION

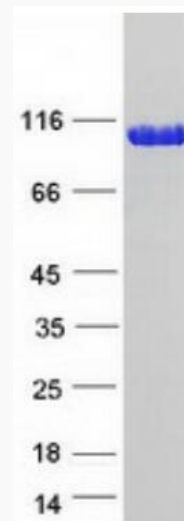
**Gene Name** TRIM28 tripartite motif containing 28 [ Homo sapiens (human) ]

 Tel: 1-631-559-9269 1-516-512-3133

 Email: [info@creative-biomart.com](mailto:info@creative-biomart.com)  Fax: 1-631-938-8127

 45-1 Ramsey Road, Shirley, NY 11967, USA

<b>Official Symbol</b>	TRIM28
<b>Synonyms</b>	KAP1; TF1B; RNF96; TIF1B; PPP1R157; TIF1beta
<b>Gene ID</b>	10155
<b>mRNA Refseq</b>	NM_005762.3
<b>Protein Refseq</b>	NP_005753.1
<b>MIM</b>	601742
<b>UniProt ID</b>	Q13263



Coomassie blue staining of purified TRIM28 protein.

 Tel: 1-631-559-9269 1-516-512-3133

 Email: [info@creative-biomart.com](mailto:info@creative-biomart.com)  Fax: 1-631-938-8127

 45-1 Ramsey Road, Shirley, NY 11967, USA