

Recombinant Human TRIM32 Protein, Myc/DDK-tagged, C13 and N15-labeled

Cat. No. TRIM32-4773H **Lot. No.** (See product label)

SPECIFICATION

Product Overview	TRIM32 MS Standard C13 and N15-labeled recombinant protein (NP_001093149) with a C-terminal MYC/DDK tag, was expressed in HEK293 cells.
Species	Human
Source	HEK293
Description	The protein encoded by this gene is a member of the tripartite motif (TRIM) family. The TRIM motif includes three zinc-binding domains, a RING, a B-box type 1 and a B-box type 2, and a coiled-coil region. The protein localizes to cytoplasmic bodies. The protein has also been localized to the nucleus, where it interacts with the activation domain of the HIV-1 Tat protein. The Tat protein activates transcription of HIV-1 genes.
Molecular Mass	72 kDa
AA Sequence	MAAAAASHLNLDALREVLECPICMESFTEEQLRPKLLHCGHTICRQCLEKLLASSING VRCPFCSKITRITSLTQLTDNLTVLKIIDTAGLSEAVGLLMCRSCGRRLPRQFCRSCG LVLCEPCREADHQPPGHCTLPVKEAAEERRRDFGEKLTRLRELMGELQRRKAALEG VSKDLQARYKAVLQEYGHEERRVQDELARSRKFFFTGSLAEVEKSNSQVVEEQSYLL NIAEVQAVSRCDYFLAKIKQADVALLEETADEEPELTASLPRELTLDVVELLKVGHV GPLQIGQAVKKPRTVNVEDSWAMEATASAASTSVTFREMDMSPEEVVASPRASPA KQRGPEAASNIQQCLFLKMGAKGSTPGMFNLPVSLYVTSQGEVLVADRGNRIQV

 Tel: 1-631-559-9269 1-516-512-3133

 Email: info@creative-biomart.com  Fax: 1-631-938-8127

 45-1 Ramsey Road, Shirley, NY 11967, USA

FTRKGFLEKEIRRSFVLSFLGADLPNLTPSVAMNCQGLIGVTDSYDNSLKVY
 TLDGHCVACHRSQLSKPWGITALPSGQFVVTDVEGGKLCFTVDRGSGVVKYSCL
 CSAVRPKFVTCDAEGTVYFTQGLGLNLENRQNEHHLEGGFSIGSVGPDGQLGRQIS
 HFFSENEFRCIAGMCDVARGDLIVADSSRKEILHFPKGGYSVLIREGLTCPVGIAL
 TPKGQLLVDCWDHCIKIYSYHLRRYSTPTRTRPLEQKLISEEDLAANDILDYKDDDD
 KV

Purity > 80% as determined by SDS-PAGE and Coomassie blue staining

Stability Stable for 3 months from receipt of products under proper storage and handling conditions.

Storage Store at -80 centigrade. Avoid repeated freeze-thaw cycles.

Concentration 50 µg/mL as determined by BCA

Storage Buffer 100 mM glycine, 25 mM Tris-HCl, pH 7.3.

GENE INFORMATION

Gene Name [TRIM32 tripartite motif containing 32 \[Homo sapiens \(human\) \]](#)

Official Symbol [TRIM32](#)

Synonyms TRIM32; tripartite motif containing 32; LGMD2H, limb girdle muscular dystrophy 2H (autosomal recessive), tripartite motif containing 32; E3 ubiquitin-protein ligase TRIM32; BBS11; HT2A; TATIP; zinc finger protein HT2A; zinc-finger protein HT2A; 72 kDa Tat-interacting protein; TAT-interactive protein, 72-KD; tripartite motif-containing 32; tripartite motif-containing protein 32; LGMD2H;

Gene ID [22954](#)

 Tel: 1-631-559-9269 1-516-512-3133

 Email: info@creative-biomart.com  Fax: 1-631-938-8127

 45-1 Ramsey Road, Shirley, NY 11967, USA

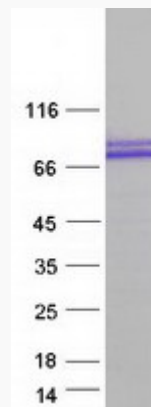
mRNA Refseq [NM_001099679](#)

Protein Refseq [NP_001093149](#)

MIM [602290](#)

UniProt ID [Q13049](#)

SDS-PAGE



 Tel: 1-631-559-9269 1-516-512-3133

 Email: info@creative-biomart.com  Fax: 1-631-938-8127

 45-1 Ramsey Road, Shirley, NY 11967, USA