

Recombinant Human TRIM40 protein, His-tagged

Cat. No. TRIM40-5243H Lot. No. (See product label)

SPECIFICATION

Product Overview	Recombinant Human TRIM40 protein(1-258 aa), fused with N-terminal His tag, was expressed in E.coli.
Species	Human
Source	E.coli
ProteinLength	1-258 aa
Form	The purified protein was lyophilized from sterile phosphate-buffered saline (PBS: 58 mM Na ₂ HPO ₄ , 17 mM NaH ₂ PO ₄ , 68 mM NaCl, pH 7.4). Prior to lyophilization, 5% (w/v) trehalose and 5% (w/v) mannitol were incorporated as cryoprotective excipients. The protein was eluted with a buffer containing 300 mM imidazole.
AASequence	MIPLQKDNQEEGVCPICQESLKEAVSTNCGHLFCRVCLTQHVEKASASGVFCCPLC RKPCSEEVLTGYICPNHQKRVCRCFCEESRLLLCVECLVSPEHMSHHELTIENTALSH YKERLNRRSRKLRKDIAELQRLKAQQEKKLQALQFQVDHGNHRLEAGPESQHQQTRE QLGALPQQWLGQLEHMPAEAAARILDISRAVTQLRSLVIDLERTAKELDTNLTKNAGDL LNRSAPQKLEVIYPQLEKGVSELLLQPPQKL
Purity	85%, by SDS-PAGE with Coomassie Brilliant Blue staining.
Storage	Store at 2-8°C for 1-2 weeks. Aliquot and store at -20°C to -80°C for up to 3 months, reconstitution with sterile water and addition of an equal volume of glycerol. Avoid repeat freeze-thaw cycles.

 Tel: 1-631-559-9269 1-516-512-3133

 Email: info@creative-biomart.com  Fax: 1-631-938-8127

 45-1 Ramsey Road, Shirley, NY 11967, USA



Reconstitution

Dissolve the product in 200 µl sterile water to achieve a working concentration of 0.25 g/µl. If experimental compatibility allows, mix the aqueous solution with an equal volume of glycerol (1:1 ratio) after initial reconstitution.

GENE INFORMATION

Gene Name

TRIM40 tripartite motif containing 40 [Homo sapiens]

Official Symbol

TRIM40

Synonyms

TRIM40; tripartite motif containing 40; tripartite motif-containing protein 40; RNF35; ring finger RNF35; RING finger protein 35; ring finger protein 40; tripartite motif-containing 40;

Gene ID

135644

mRNA Refseq

NM_138700

Protein Refseq

NP_619645

UniProt ID

Q6P9F5

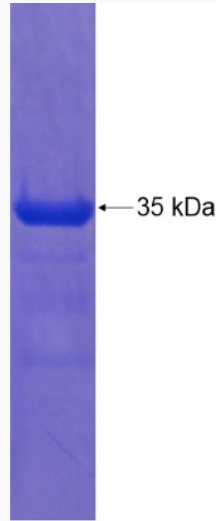
Tel: 1-631-559-9269 1-516-512-3133

Email: info@creative-biomart.com Fax: 1-631-938-8127

45-1 Ramsey Road, Shirley, NY 11967, USA



SDS-PAGE



Tel: 1-631-559-9269 1-516-512-3133

Email: info@creative-biomart.com Fax: 1-631-938-8127

45-1 Ramsey Road, Shirley, NY 11967, USA