

Recombinant Human TRIM72 Protein, GST-tagged

Cat. No. TRIM72-4780H **Lot. No.** (See product label)

SPECIFICATION

Product Overview	Human LOC493829 full-length ORF (AAH33211.1, 1 a.a. - 269 a.a.) recombinant protein with GST-tag at N-terminal.
Species	Human
Source	Wheat Germ
Description	TRIM72 (Tripartite Motif Containing 72) is a Protein Coding gene. Among its related pathways are Cardiac conduction and Smooth Muscle Contraction. GO annotations related to this gene include phosphatidylserine binding. An important paralog of this gene is TRIM50.
Molecular Mass	55.9 kDa
AA Sequence	MSAAPGLLHQELSCPLCLQLFDAPVTAECGHSFCRACLGRVAGEPAADGTVLCPCC QAPTRPQALSTNLQLARLVEGLAQVPQGHCEEHLDP LSIYCEQDRALVCGVCASLG SHRGHRLLPAAEAHARLKTQLPQQKLQLQEACMRKEKSVAVLEHQLVEVEETVRQF RGAVGEQLGKMRVFLAALEGLDREAERVRGEAGVALRRELGSLNSYLEQLRQME KVLEEVADKPQTEFLMKYCLVTSRLQKILAESPPPARLDIQLPIIS
Applications	Enzyme-linked Immunoabsorbent Assay Western Blot (Recombinant protein) Antibody Production Protein Array

 Tel: 1-631-559-9269 1-516-512-3133

 Email: info@creative-biomart.com  Fax: 1-631-938-8127

 45-1 Ramsey Road, Shirley, NY 11967, USA

Notes	Best use within three months from the date of receipt of this protein.
Storage	Store at -80 centigrade. Aliquot to avoid repeated freezing and thawing.
Storage Buffer	50 mM Tris-HCl, 10 mM reduced Glutathione, pH=8.0 in the elution buffer.

GENE INFORMATION

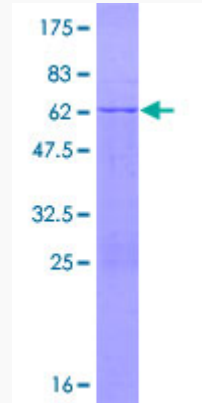
Gene Name	TRIM72 tripartite motif containing 72 [Homo sapiens]
Official Symbol	TRIM72
Synonyms	TRIM72; tripartite motif containing 72; tripartite motif-containing protein 72; mitsugumin-53; tripartite motif-containing 72; MG53;
Gene ID	493829
mRNA Refseq	NM_001008274
Protein Refseq	NP_001008275
MIM	613288
UniProt ID	Q6ZMU5

 Tel: 1-631-559-9269 1-516-512-3133

 Email: info@creative-biomart.com  Fax: 1-631-938-8127

 45-1 Ramsey Road, Shirley, NY 11967, USA

**Quality Control
Testing**



12.5% SDS-PAGE Stained with Coomassie Blue

 Tel: 1-631-559-9269 1-516-512-3133

 Email: info@creative-biomart.com  Fax: 1-631-938-8127

 45-1 Ramsey Road, Shirley, NY 11967, USA