

Recombinant Human TRIML1 Protein, GST-tagged

Cat. No. TRIML1-4321H **Lot. No.** (See product label)

SPECIFICATION

Product Overview	Human FLJ36180 full-length ORF (AAH15684.1, 1 a.a. - 192 a.a.) recombinant protein with GST-tag at N-terminal.
Species	Human
Source	Wheat Germ
Description	The protein encoded by this gene is a tripartite motif family protein with similarities to E3 ubiquitin-protein ligases. While the function of the encoded protein has not been determined, the orthologous protein in mouse has been shown to bind ubiquitin-specific protease 5 and is involved in the blastocyst development stage. [provided by RefSeq, Sep 2016]
Molecular Mass	47.8 kDa
AA Sequence	MKEMLRKFSTEITLDPATANAYLVLSEDLKSVKYGGSRQQLPDNPERFDQSATVLGT QIFTSGRHYWEVEVGNKTEWEV/GICKDSVSRKGNLPPKPGDLFSLIGLKIGDDYSLW VSSPLKGQHVREPVCKVGVFLDYESGHIAFYNGTDESLIYSFPQASFQEALRPIFSPC LPNEGTTNDPLTICSLNSHV
Applications	Enzyme-linked Immunoabsorbent Assay Western Blot (Recombinant protein) Antibody Production Protein Array

 Tel: 1-631-559-9269 1-516-512-3133

 Email: info@creative-biomart.com  Fax: 1-631-938-8127

 45-1 Ramsey Road, Shirley, NY 11967, USA

Notes	Best use within three months from the date of receipt of this protein.
Storage	Store at -80 centigrade. Aliquot to avoid repeated freezing and thawing.
Storage Buffer	50 mM Tris-HCl, 10 mM reduced Glutathione, pH=8.0 in the elution buffer.

GENE INFORMATION

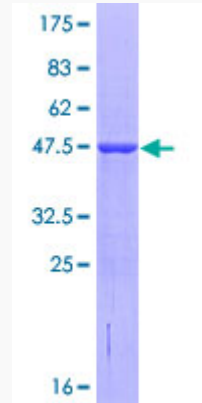
Gene Name	TRIML1 tripartite motif family-like 1 [Homo sapiens]
Official Symbol	TRIML1
Synonyms	TRIML1; tripartite motif family-like 1; probable E3 ubiquitin-protein ligase TRIML1; FLJ36180; RNF209; RING finger protein 209; tripartite motif family-like protein 1; MGC138638; MGC138639;
Gene ID	339976
mRNA Refseq	NM_178556
Protein Refseq	NP_848651
UniProt ID	Q8N9V2

 Tel: 1-631-559-9269 1-516-512-3133

 Email: info@creative-biomart.com  Fax: 1-631-938-8127

 45-1 Ramsey Road, Shirley, NY 11967, USA

**Quality Control
Testing**



12.5% SDS-PAGE Stained with Coomassie Blue.

 Tel: 1-631-559-9269 1-516-512-3133

 Email: info@creative-biomart.com  Fax: 1-631-938-8127

 45-1 Ramsey Road, Shirley, NY 11967, USA