

## Recombinant Human TRPM4 protein, His-tagged

Cat. No. TRPM4-3435H Lot. No. (See product label)

### SPECIFICATION

<b>Product Overview</b>	Recombinant Human TRPM4 protein is produced by E. coli-derived, PET28a expression system. This protein is fused with a His tag.
<b>Species</b>	Human
<b>Source</b>	E.coli
<b>ProteinLength</b>	1-350 aa
<b>Form</b>	The purified protein was resolved in 1M PBS (58mM Na <sub>2</sub> HPO <sub>4</sub> , 17mM NaH <sub>2</sub> PO <sub>4</sub> , 68mM NaCl, pH7.0) added with 300mM Imidazole and 15%glycerol.
<b>Molecular Mass</b>	44 kDa
<b>AA Sequence</b>	MVVPEKEQSWIPKIFKKKTCTTFIVDSTDPGGTLCQCGRPRTAHPAVAMEDAFGAAV VTVWSDAHTTEKPTDAYGELDFTGAGRKHSNFLRLSDRTDPAAVYSLVTRTWGF RAPNLVVSVLGGSGGPVLQTLWLQDLLRRGLVRAAQSTGAWIVTGGLHTGIGRHVG VAVRDHQMASTGGTKVVAMGVAPWGVVRNRDTLINPKGSFPARYRWRGDPEDGV QFPLDYNYSAFFLVDDGTHGCLGGENRFLRLLESYISQQKTGVGGTGIDIPVLLLLID GDEKMLTRIEATQAQLPCLLVAGSGGAADCLAETLEDTLAPGSGGARQGEARDRI RRFFPKGDLEVLQAQ
<b>Applications</b>	Blocking peptide.
<b>Notes</b>	Centrifuge vial before opening. When reconstituting, gently pipet and wash down the

 Tel: 1-631-559-9269 1-516-512-3133

 Email: [info@creative-biomart.com](mailto:info@creative-biomart.com)  Fax: 1-631-938-8127

 45-1 Ramsey Road, Shirley, NY 11967, USA

sides of the vial to ensure full recovery of the protein into solution.

**Storage**

Store it under sterile conditions at -20 centigrade to -80 centigrade. It is recommended that the protein be aliquoted for optimal storage. Avoid repeated freeze-thaw cycles.

**Reconstitution**

Reconstitute at 0.25 g/μl in 200 μl sterile water for short-term storage. Reconstitution with 200 μl 50% glycerol solution is recommended for longer term storage.

**Shipping**

The product is shipped with ice packs. Upon receipt, store it immediately at -20 centigrade to -80 centigrade.

## GENE INFORMATION

**Gene Name**

TRPM4 transient receptor potential cation channel, subfamily M, member 4 [ Homo sapiens ]

**Official Symbol**

TRPM4

**Synonyms**

TRPM4; transient receptor potential cation channel, subfamily M, member 4; FLJ20041; LTrpC4; hTRPM4; melastatin-4; PFHB1B; TRPM4B;

**Gene ID**

54795

**mRNA Refseq**

NM\_001195227

**Protein Refseq**

NP\_001182156

**MIM**

606936

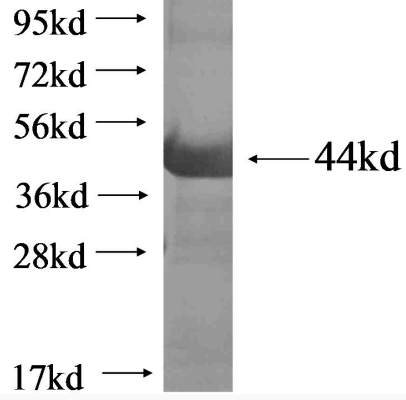
**UniProt ID**

Q8TD43

 Tel: 1-631-559-9269 1-516-512-3133

 Email: [info@creative-biomart.com](mailto:info@creative-biomart.com)  Fax: 1-631-938-8127

 45-1 Ramsey Road, Shirley, NY 11967, USA



 Tel: 1-631-559-9269 1-516-512-3133

 Email: [info@creative-biomart.com](mailto:info@creative-biomart.com)  Fax: 1-631-938-8127

 45-1 Ramsey Road, Shirley, NY 11967, USA