

## Recombinant Human TRPM8 Protein (Met1-Pro300), N-His-tagged

Cat. No. TRPM8-06H Lot. No. (See product label)

### SPECIFICATION

<b>Product Overview</b>	Purified recombinant protein of Human transient receptor potential cation channel, subfamily M, member 8 (TRPM8), Met1-Pro300, with N-terminal His tag, expressed in E. coli.
<b>Species</b>	Human
<b>Source</b>	E.coli
<b>ProteinLength</b>	Met1-Pro300
<b>Description</b>	Predicted to enable ligand-gated calcium channel activity. Predicted to be involved in calcium ion transmembrane transport and positive regulation of cold-induced thermogenesis. Predicted to act upstream of or within several processes, including cellular calcium ion homeostasis; response to cold; and thermoception. Located in plasma membrane.
<b>Molecular Mass</b>	34.3 kDa
<b>Purity</b>	> 80% as determined by SDS-PAGE and Coomassie blue staining
<b>Stability</b>	Stable for at least 1 year from receipt of products under proper storage and handling conditions. Avoid repeated freeze-thaw cycles.
<b>Storage</b>	Store at -80 centigrade after receiving vials.

 Tel: 1-631-559-9269 1-516-512-3133

 Email: [info@creative-biomart.com](mailto:info@creative-biomart.com)  Fax: 1-631-938-8127

 45-1 Ramsey Road, Shirley, NY 11967, USA

**Concentration** >50 µg/mL as determined by microplate BCA method

**Storage Buffer** 50mM Tris, pH8.0, 8M Urea

## GENE INFORMATION

**Gene Name** TRPM8 transient receptor potential cation channel subfamily M member 8 [ Homo sapiens (human) ]

**Official Symbol** TRPM8

**Synonyms** TRPM8; transient receptor potential cation channel subfamily M member 8; TRPP8; LTRPC6; trp-p8; LTrpC-6; transient receptor potential cation channel subfamily M member 8; TRPM8 cationic channel; transient receptor potential p8; transient receptor potential subfamily M member 8

**Gene ID** 79054

**mRNA Refseq** NM\_024080

**Protein Refseq** NP\_076985

**MIM** 606678

**UniProt ID** Q7Z2W7

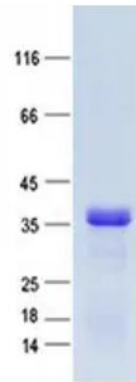
 Tel: 1-631-559-9269 1-516-512-3133

 Email: [info@creative-biomart.com](mailto:info@creative-biomart.com)  Fax: 1-631-938-8127

 45-1 Ramsey Road, Shirley, NY 11967, USA



SDS-PAGE



Tel: 1-631-559-9269 1-516-512-3133

Email: [info@creative-biomart.com](mailto:info@creative-biomart.com) Fax: 1-631-938-8127

45-1 Ramsey Road, Shirley, NY 11967, USA