

## Recombinant Human TRPM8 protein, His-tagged

Cat. No. TRPM8-1171H Lot. No. (See product label)

### SPECIFICATION

<b>Product Overview</b>	Recombinant Human TRPM8 protein(Q7Z2W7)(690-1104aa), fused with C-terminal His tag, was expressed in HEK293.
<b>Species</b>	Human
<b>Source</b>	HEK293
<b>ProteinLength</b>	690-1104aa
<b>Form</b>	Lyophilized from a 0.2 µm filtered PBS, 6% Trehalose, pH 7.4.
<b>Molecular Mass</b>	50.5 kDa
<b>Storage</b>	Store at -20°C/-80°C upon receipt, aliquoting is necessary for mutiple use. Avoid repeated freeze-thaw cycles.
<b>Reconstitution</b>	We recommend that this vial be briefly centrifuged prior to opening to bring the contents to the bottom. Please reconstitute protein indeionized sterile water to a concentration of 0.1-1.0 mg/mL. Aliquot for long-term storage at -80°C. Solubilize for 60 minutes at room temperature with occasional gentle mixing. Avoid vigorous shaking or vortexing.
<b>AA Sequence</b>	TKNWKIILCLFIIPLVGC GFVSFRKPKVDKHKLLWYYYVAFFTSPFVVF SWNVVFYIAF LLLFAYVLLMDFHSVPHPELVLYSLVFLFCDEVRQWYVNGVNYFTDLWNVMDTL GLFYFIAGIVFRLHSSNKSSLYSGRVIFCLDYIIFTLRLIHIFTVSRNLGPKIIMLQRMLID

 Tel: 1-631-559-9269 1-516-512-3133

 Email: [info@creative-biomart.com](mailto:info@creative-biomart.com)  Fax: 1-631-938-8127

 45-1 Ramsey Road, Shirley, NY 11967, USA

VFFFLFLFAVWMVAFGVARQGILRQNEQRWRWIFRSVIYEPYLAMFGQVPSDVDGT  
 TYDFAHCTFTGNESKPLCVLDELHNLPRFPEWITIPLVCIYMLSTNILLVLLVAMFGY  
 TVGTVQENNDQVWKFQRYFLVQEYCSRLNIPFPFIVFAYFYMVVKKCFKCCCCKEKN  
 MESSVCCFKNEDNETLAWEGVMKENYLKINTKANDTSEEMRHRFRQLDTKLNLDLK  
 GLLKEIANKIK

## GENE INFORMATION

**Gene Name** [TRPM8 transient receptor potential cation channel, subfamily M, member 8 \[ Homo sapiens \]](#)

**Official Symbol** [TRPM8](#)

**Synonyms** [TRPM8](#); transient receptor potential cation channel, subfamily M, member 8; transient receptor potential cation channel subfamily M member 8; trp-p8; LTrpC-6; transient receptor potential p8; short form of the TRPM8 cationic channel; long transient receptor potential channel 6; transient receptor potential subfamily M member 8; TRPP8; LTRPC6; MGC2849

**Gene ID** [79054](#)

**mRNA Refseq** [NM\\_024080](#)

**Protein Refseq** [NP\\_076985](#)

**MIM** [606678](#)

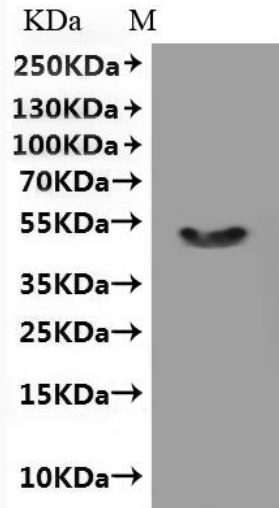
**UniProt ID** [Q7Z2W7](#)

 Tel: 1-631-559-9269 1-516-512-3133

 Email: [info@creative-biomart.com](mailto:info@creative-biomart.com)  Fax: 1-631-938-8127

 45-1 Ramsey Road, Shirley, NY 11967, USA

**SDS-PAGE**



 Tel: 1-631-559-9269 1-516-512-3133

 Email: [info@creative-biomart.com](mailto:info@creative-biomart.com)  Fax: 1-631-938-8127

 45-1 Ramsey Road, Shirley, NY 11967, USA