

Recombinant Human TRUB2 protein, His-tagged

Cat. No. TRUB2-3441H Lot. No. (See product label)

SPECIFICATION

Product Overview	Recombinant Human TRUB2 protein(1-331 aa), fused with N-terminal His tag, was expressed in E.coli.
Species	Human
Source	E.coli
ProteinLength	1-331 aa
Form	The purified protein was Lyophilized from sterile PBS (58mM Na ₂ HPO ₄ , 17mM NaH ₂ PO ₄ , 68mM NaCl, pH7.4). 5 % trehalose and 5 % mannitol are added as protectant before lyophilization. The elution buffer contain 300mM imidazole.
AASequence	MGSAGLSRLHGLFAVYKPPGLKWKHLRDTVELQLLKGLNARKPPAPKQVRVRFLLGP MEGSEEKELTLTATSVPSFINHPLVCGPAFAHLKVGVGHRDLDAQASGVLVLGVGHG CRLLTDMYNAHLTKDYTVRGLLGKATDDFREDGRLVEKTTYDHSVREKLDRI LAVIQ GSHQKALVMYSNLDLKTQEAYEMAVRGLIRPMNKSPMLITGIRCLYFAPPEFLLEVQ CMHETQKELRKLVEIGLELKTAVCTQVRRTRDGFFTLDSALLRTQWDLTNIQDAIR AATPQVAEELEKSLSPGLDTKQLPSPGWSWDSQGPSSTLGLERGAGQ
Purity	85%, by SDS-PAGE with Coomassie Brilliant Blue staining.
Storage	Store at 2-8°C for 1-2 weeks. Aliquot and store at -20°C to -80°C for up to 3 months, reconstitution with sterile water and addition of an equal volume of glycerol. Avoid repeat freeze-thaw cycles.

 Tel: 1-631-559-9269 1-516-512-3133

 Email: info@creative-biomart.com  Fax: 1-631-938-8127

 45-1 Ramsey Road, Shirley, NY 11967, USA

Reconstitution

Dissolve the product in 200 µl sterile water to achieve a working concentration of 0.25 g/µl. If experimental compatibility allows, mix the aqueous solution with an equal volume of glycerol (1:1 ratio) after initial reconstitution.

GENE INFORMATION

Gene Name TRUB2 TruB pseudouridine (psi) synthase homolog 2 (E. coli) [Homo sapiens]

Official Symbol TRUB2

Synonyms TRUB2; TruB pseudouridine (psi) synthase homolog 2 (E. coli); probable tRNA pseudouridine synthase 2; CLONE24922; RP11-339B21.1;

Gene ID 26995

mRNA Refseq NM_015679

Protein Refseq NP_056494

MIM 610727

UniProt ID O95900

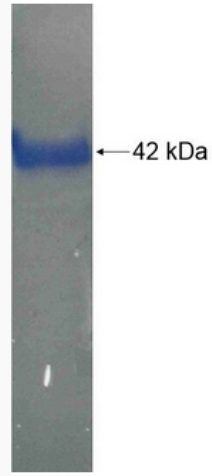
 Tel: 1-631-559-9269 1-516-512-3133

 Email: info@creative-biomart.com  Fax: 1-631-938-8127

 45-1 Ramsey Road, Shirley, NY 11967, USA



SDS-PAGE



☎ Tel: 1-631-559-9269 1-516-512-3133

☎ Email: info@creative-biomart.com ☎ Fax: 1-631-938-8127

☎ 45-1 Ramsey Road, Shirley, NY 11967, USA