

Recombinant Human TRUB2 Protein, Myc/DDK-tagged, C13 and N15-labeled

Cat. No. TRUB2-4704H Lot. No. (See product label)

SPECIFICATION

Product Overview	TRUB2 MS Standard C13 and N15-labeled recombinant protein (NP_056494) with a C-terminal MYC/DDK tag, was expressed in HEK293 cells.
Species	Human
Source	HEK293
Description	Pseudouridine is an abundant component of rRNAs and tRNAs and is enzymatically generated by isomerization of uridine by pseudouridine synthase.
Molecular Mass	36.7 kDa
AA Sequence	MGSAGLSRLHGLFAVYKPPGLKWKHLRDTVELQLLKGLNARKPPAPKQVRVRFLLGP MEGSEEKELTLTATSVPSFINHPLVCGPAFAHLKVGVGHRDLDAQASGVLVLGVGHG CRLLTDMYNAHLTKDYTVRGLLGKATDDFREDGRLVEKTTYDHSVREKLDRI LAVIQ GSHQKALVMYSNLDLKTQEAYEMAVRGLIRPMNKSPMLITGIRCLYFAPPEFLLEVQ CMHETQKELRKLVEIGLELKTAVCTQVRRTRDGFFTLDSALLRTQWDLTNIQDAIR AATPQVAAELEKSLSPGLDTKQLPSPGWSWDSQGSPSTLGLERGAGQTRTRPLEQ KLISEEDLAANDILDYKDDDDKV
Purity	> 80% as determined by SDS-PAGE and Coomassie blue staining
Stability	Stable for 3 months from receipt of products under proper storage and handling conditions.

 Tel: 1-631-559-9269 1-516-512-3133

 Email: info@creative-biomart.com  Fax: 1-631-938-8127

 45-1 Ramsey Road, Shirley, NY 11967, USA

Storage	Store at -80 centigrade. Avoid repeated freeze-thaw cycles.
----------------	---

Concentration	50 µg/mL as determined by BCA
----------------------	-------------------------------

Storage Buffer	100 mM glycine, 25 mM Tris-HCl, pH 7.3.
-----------------------	---

GENE INFORMATION

Gene Name	TRUB2 TruB pseudouridine synthase family member 2 [Homo sapiens (human)]
------------------	--

Official Symbol	TRUB2
------------------------	-------

Synonyms	TRUB2; TruB pseudouridine (psi) synthase homolog 2 (E. coli); probable tRNA pseudouridine synthase 2; CLONE24922; RP11-339B21.1;
-----------------	--

Gene ID	26995
----------------	-------

mRNA Refseq	NM_015679
--------------------	-----------

Protein Refseq	NP_056494
-----------------------	-----------

MIM	610727
------------	--------

UniProt ID	O95900
-------------------	--------

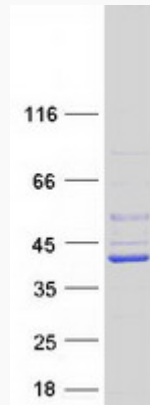
 Tel: 1-631-559-9269 1-516-512-3133

 Email: info@creative-biomart.com  Fax: 1-631-938-8127

 45-1 Ramsey Road, Shirley, NY 11967, USA



SDS-PAGE



Tel: 1-631-559-9269 1-516-512-3133

Email: info@creative-biomart.com Fax: 1-631-938-8127

45-1 Ramsey Road, Shirley, NY 11967, USA