

## Recombinant Human TSC1 protein(690-993aa), His-tagged

Cat. No. TSC1-4194H Lot. No. (See product label)

### SPECIFICATION

<b>Product Overview</b>	Recombinant Human TSC1 protein(Q92574)(690-993aa), fused with N-terminal His tag, was expressed in E.coli.
<b>Species</b>	Human
<b>Source</b>	E.coli
<b>ProteinLength</b>	690-993aa
<b>Form</b>	If the delivery form is liquid, the default storage buffer is Tris/PBS-based buffer, 5%-50% glycerol. If the delivery form is lyophilized powder, the buffer before lyophilization is Tris/PBS-based buffer, 6% Trehalose, pH 8.0.
<b>Molecular Mass</b>	42.3 kDa
<b>Purity</b>	Greater than 85% as determined by SDS-PAGE.
<b>Storage</b>	Store at -20°C/-80°C upon receipt, aliquoting is necessary for mutiple use. Avoid repeated freeze-thaw cycles.
<b>Reconstitution</b>	We recommend that this vial be briefly centrifuged prior to opening to bring the contents to the bottom. Please reconstitute protein in deionized sterile water to a concentration of 0.1-1.0 mg/mL. We recommend to add 5-50% of glycerol (final concentration) and aliquot for long-term storage at -20°C/-80°C.

 Tel: 1-631-559-9269 1-516-512-3133

 Email: [info@creative-biomart.com](mailto:info@creative-biomart.com)  Fax: 1-631-938-8127

 45-1 Ramsey Road, Shirley, NY 11967, USA

**AA Sequence**

TLRDQLLLLLHNQLLYERFKRQQHALRNRLLLRKVIKAAAAL EEHNAAMKDQLKLQEKD  
 IQMWKVS LQKEQARYNQLQEQRDTMVTKLHSQIRQLQH DREEFY NQSQELQTKLE  
 DCRNMIAELRIELKKANNKVCHTELLLSQVSQKLSNSESVQQQMEFLNRQLLVLGEV  
 NELYLEQLQNKHSDTTKEVEMMKAAAYRKELEKNRSHVLQQTQRLDTSQKRILELES  
 HLAKKDHLLLEQKKYLEDVKLQARGQLQAAESRYEAQKRITQVFELEILDLYGRLEKD  
 GLLKKLEEEKAEAAEAAEERL

**GENE INFORMATION**

**Gene Name** TSC1 tuberous sclerosis 1 [ Homo sapiens ]

**Official Symbol** TSC1

**Synonyms** TSC1; tuberous sclerosis 1; TSC; hamartin; KIAA0243; LAM; tumor suppressor; tuberous sclerosis 1 protein; MGC86987;

**Gene ID** 7248

**mRNA Refseq** NM\_000368

**Protein Refseq** NP\_000359

**MIM** 605284

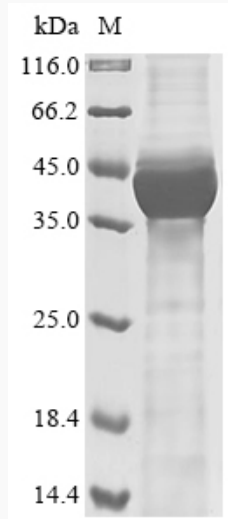
**UniProt ID** Q92574

 Tel: 1-631-559-9269 1-516-512-3133

 Email: [info@creative-biomart.com](mailto:info@creative-biomart.com)  Fax: 1-631-938-8127

 45-1 Ramsey Road, Shirley, NY 11967, USA

**SDS-PAGE**



 Tel: 1-631-559-9269 1-516-512-3133

 Email: [info@creative-biomart.com](mailto:info@creative-biomart.com)  Fax: 1-631-938-8127

 45-1 Ramsey Road, Shirley, NY 11967, USA