

Recombinant Human TSEN2 Protein, Myc/DDK-tagged, C13 and N15-labeled

Cat. No. TSEN2-3157H Lot. No. (See product label)

SPECIFICATION

Product Overview

TSEN2 MS Standard C13 and N15-labeled recombinant protein (NP_001138864) with a C-terminal MYC/DDK tag, was expressed in HEK293 cells.

Species

Human

Source

HEK293

Description

This gene encodes one of the subunits of the tRNA splicing endonuclease. This endonuclease catalyzes the first step in RNA splicing which is the removal of introns. Mutations in this gene have been associated with pontocerebellar hypoplasia type 2. A pseudogene has been identified on chromosome 4. Multiple transcript variants encoding different isoforms have been found for this gene.

Molecular Mass

53.2 kDa

AA Sequence

MAEAVFHAPKRKRVRVYETYESPLPIPFQGDHGPLKEFKIFRAEMINNNVIVRNAEDIE
 QLYGKGYFGKGILSRSPSFTISDPKLVAKWKDMKTNMPIITSKRYQHSVEWAAELM
 RRQQQDESTVRRILKDYTKPLEHPPVKRNEEAQVHDKLNSGMVSNMEGTAGGERP
 SVVNGDSGKSGGVGDPREPLGCLQEGSGCHPTTESFEKSVREDASPLPHVCCCKQ
 DALILQRGLHHEDGSQHIGLLHPGDRGPDHEYVLEEAECAMSEREAAPNEELVQR
 NRLICRRNPYRIFEYLQLSLEEAFFLVYALGCLSIYYEKEPLTIVKLWKAFTVVQPTFR
 TTYMAYHYFRSKGWVPKVGLKYGTDLLLYRKGPPFYHASYSVIIELVDDHFEGSLRR
 PLSWKSLAALSRSVSVNVSKELMLCYLIKPSTMTDKEMESPECMKRIKVQEILSRWV

 Tel: 1-631-559-9269 1-516-512-3133

 Email: info@creative-biomart.com  Fax: 1-631-938-8127

 45-1 Ramsey Road, Shirley, NY 11967, USA

SSRERSDQDDLTRTRPLEQKLISEEDLAANDILDYKDDDDKV

Purity > 80% as determined by SDS-PAGE and Coomassie blue staining

Stability Stable for 3 months from receipt of products under proper storage and handling conditions.

Storage Store at -80 centigrade. Avoid repeated freeze-thaw cycles.

Concentration 50 µg/mL as determined by BCA

Storage Buffer 100 mM glycine, 25 mM Tris-HCl, pH 7.3.

GENE INFORMATION

Gene Name [TSEN2 tRNA splicing endonuclease subunit 2 \[Homo sapiens \(human\) \]](#)

Official Symbol [TSEN2](#)

Synonyms TSEN2; tRNA splicing endonuclease 2 homolog (S. cerevisiae); tRNA splicing endonuclease 2 homolog (SEN2, S. cerevisiae); tRNA-splicing endonuclease subunit Sen2; MGC2776; SEN2; SEN2L; hsSen2; tRNA-intron endonuclease Sen2; PCH2B; MGC4440;

Gene ID [80746](#)

mRNA Refseq [NM_001145392](#)

Protein Refseq [NP_001138864](#)

MIM [608753](#)

 Tel: 1-631-559-9269 1-516-512-3133

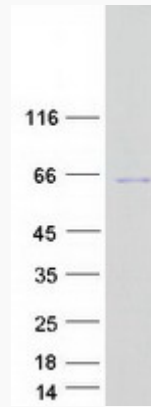
 Email: info@creative-biomart.com  Fax: 1-631-938-8127

 45-1 Ramsey Road, Shirley, NY 11967, USA

UniProt ID

Q8NCE0

SDS-PAGE



 Tel: 1-631-559-9269 1-516-512-3133

 Email: info@creative-biomart.com  Fax: 1-631-938-8127

 45-1 Ramsey Road, Shirley, NY 11967, USA