

Recombinant Chicken TSHB Protein, His-tagged

Cat. No. TSHB-497C **Lot. No.** (See product label)

SPECIFICATION

Product Overview	Recombinant Chicken TSHB Protein (Gln17-Met134) with N-His tag was expressed in E. coli.
Species	Chicken
Source	E.coli
ProteinLength	Gln17-Met134
Description	Indispensable for the control of thyroid structure and metabolism.
Form	Freeze-dried powder
Molecular Mass	Predicted Molecular Mass: 16.9 kDa
Purity	> 90%
Applications	Positive Control; Immunogen; SDS-PAGE; WB.
Stability	The thermal stability is described by the loss rate. The loss rate was determined by accelerated thermal degradation test, that is, incubate the protein at 37 centigrade for 48h, and no obvious degradation and precipitation were observed. The loss rate is less than 5% within the expiration date under appropriate storage condition.
Storage	Avoid repeated freeze/thaw cycles. Store at 2-8 centigrade for one month. Aliquot and

 Tel: 1-631-559-9269 1-516-512-3133

 Email: info@creative-biomart.com  Fax: 1-631-938-8127

 45-1 Ramsey Road, Shirley, NY 11967, USA

store at -80 centigrade for 12 months.

Storage Buffer PBS, pH7.4, containing 0.01% SKL, 1 mM DTT, 5% Trehalose and Proclin300.

Reconstitution Reconstitute in sterile water to a concentration of 0.1-1.0 mg/mL. Do not vortex.

GENE INFORMATION

Gene Name TSHB thyroid stimulating hormone beta [Gallus gallus (chicken)]

Official Symbol TSHB

Synonyms TSHB; thyroid stimulating hormone beta; TSH-B; thyrotropin subunit beta; TSH-beta; thyroid-stimulating hormone beta subunit; thyroid-stimulating hormone subunit beta; thyroptin beta subunit; thyrotropin beta chain; thyrotropin beta subunit

Gene ID 395937

mRNA Refseq NM_205063

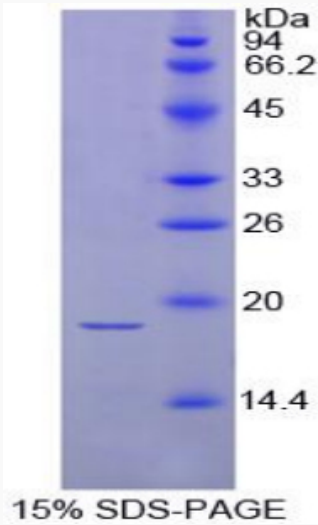
Protein Refseq NP_990394

UniProt ID O57340

 Tel: 1-631-559-9269 1-516-512-3133

 Email: info@creative-biomart.com  Fax: 1-631-938-8127

 45-1 Ramsey Road, Shirley, NY 11967, USA



 Tel: 1-631-559-9269 1-516-512-3133

 Email: info@creative-biomart.com  Fax: 1-631-938-8127

 45-1 Ramsey Road, Shirley, NY 11967, USA