

## Recombinant Mouse TSHB and TSHA Protein, His tagged

Cat. No. TSHB-TSHA-02M Lot. No. (See product label)

### SPECIFICATION

<b>Product Overview</b>	Recombinant Mouse TSHB and TSHA Protein, (Met1-Val138, one mutant and Ala25-Ser116) with His tag was expressed in CHO.
<b>Species</b>	Mouse
<b>Source</b>	CHO
<b>ProteinLength</b>	TSHB: Met1-Val138, one mutant TSHA: Ala25-Ser116
<b>Description</b>	Thyroid-stimulating hormone, commonly called TSH and also referred to as thyrotropin, is a hormone that your pituitary gland releases to trigger your thyroid to produce and release its own hormones-thyroxine (T4) and triiodothyronine (T3). These two hormones are essential for maintaining your body's metabolic rate-the speed at which your body transforms the food you eat into energy and uses it.
<b>Molecular Mass</b>	~ 27 kDa
<b>AA Sequence</b>	MTALFLMSMLFGLTCGQAMSFCIPTEYTMHIERRECAVCLTINTTICAGYCMTRDING KLFLPKYALSQDVCTYRDFIYRTVEIPGCPLHVAPYFSYPVALSCKRGKCNTDYSDCI HEAIKNTNYCTKPQKSYLVGFSVHHHHHH MAPDVQDCPECTLQENPFFSQPGAPILQCMGCCFSRAYPTPLRSKKTMLVQKNVTS ESTCCVAKSYNRVTVMGGFKVENHTACHCSTCYHKSHHHHHH
<b>Endotoxin</b>	< 1 EU/μg protein by LAL

 Tel: 1-631-559-9269 1-516-512-3133

 Email: [info@creative-biomart.com](mailto:info@creative-biomart.com)  Fax: 1-631-938-8127

 45-1 Ramsey Road, Shirley, NY 11967, USA

<b>Purity</b>	> 90% as determined by SDS-PAGE
<b>Storage</b>	Store it under sterile conditions at -20 to -80 centigrade. It is recommended that the protein be aliquoted for optimal storage. Avoid repeated freeze-thaw cycles.
<b>Concentration</b>	0.5 mg/mL
<b>Storage Buffer</b>	Supplied in PBS buffer, pH 7.4

## GENE INFORMATION

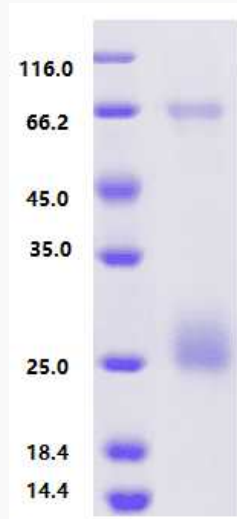
<b>Official Symbol</b>	TSHB, TSHA
<b>Synonyms</b>	TSHB; thyroid stimulating hormone subunit beta; TSH-B; TSH-BETA; thyrotropin subunit beta; thyroid stimulating hormone beta; thyrotropin beta chain; CGA; glycoprotein hormones, alpha polypeptide; HCG; LHA; FSHA; GPA1; GPHa; TSHA; GPHA1; CG-ALPHA; glycoprotein hormones alpha chain; FSH-alpha; LSH-alpha; TSH-alpha; anterior pituitary glycoprotein hormones common subunit alpha; choriogonadotropin alpha chain; chorionic gonadotrophin subunit alpha; chorionic gonadotropin, alpha polypeptide; follicle-stimulating hormone alpha chain; follicle-stimulating hormone alpha subunit; follitropin alpha chain; luteinizing hormone alpha chain; lutropin alpha chain; thyroid-stimulating hormone alpha chain; thyrotropin alpha chain

 Tel: 1-631-559-9269 1-516-512-3133

 Email: [info@creative-biomart.com](mailto:info@creative-biomart.com)  Fax: 1-631-938-8127

 45-1 Ramsey Road, Shirley, NY 11967, USA

**SDS-PAGE analysis  
profile of purified  
TSHB&TSHA**



 Tel: 1-631-559-9269 1-516-512-3133

 Email: [info@creative-biomart.com](mailto:info@creative-biomart.com)  Fax: 1-631-938-8127

 45-1 Ramsey Road, Shirley, NY 11967, USA