

Recombinant Human TSHB [Y124D] and TSHA Heterodimer Protein, His tagged

Cat. No. TSHB-TSHA-08HM **Lot. No.** (See product label)

SPECIFICATION

Species	Human
Source	CHO
ProteinLength	TSHB (Phe21-Val138, Y124D mutation) & TSHA (Ala25-Ser116)
Description	<p>The four human glycoprotein hormones chorionic gonadotropin (CG), luteinizing hormone (LH), follicle stimulating hormone (FSH), and thyroid stimulating hormone (TSH) are dimers consisting of alpha and beta subunits that are associated noncovalently. The alpha subunits of these hormones are identical, however, their beta chains are unique and confer biological specificity. Thyroid stimulating hormone functions in the control of thyroid structure and metabolism. The protein encoded by this gene is the beta subunit of thyroid stimulating hormone. Mutations in this gene are associated with congenital central and secondary hypothyroidism and Hashimoto's thyroiditis. Alternative splicing of this gene results in multiple transcript variants.</p>
Molecular Mass	TSHB: 15 kDa TSHA: 12 kDa
AA Sequence	<p>TSHB: FCIPT EYTMHIERRECA YCLTINTTICAGYCMTRDINGKLF LPKYALSQDVCTY RDFIYRTVEIPGCPLHVAPYFSYPVALSCKCGKCNTDYSDCIHEAIKTNDCTKPQKSY LVGFSVHHHHHHHHHH TSHA: APDVQDCPECTLQENPFFSQPGAPILQCMGCCFS RAYPTPLRSKKTMLVQKNVTSESTCCVAKSYNRVTVMGGFKVENHTACHCSTCY</p>

 Tel: 1-631-559-9269 1-516-512-3133

 Email: info@creative-biomart.com  Fax: 1-631-938-8127

 45-1 Ramsey Road, Shirley, NY 11967, USA

	HKSHHHHHHHHHH
Endotoxin	< 1 EU/μg by LAL
Purity	> 90% by SDS-PAGE
Storage	Store it under sterile conditions at -20 to -80 centigrade. It is recommended that the protein be aliquoted for optimal storage. Avoid repeated freeze-thaw cycles.
Storage Buffer	Sterile PBS, pH 7.4
Concentration	0.15 mg/mL by BCA
GeneID 2	1081

GENE INFORMATION

Gene Name	TSHB thyroid stimulating hormone subunit beta [Homo sapiens (human)]
Official Symbol	TSHB
Synonyms	TSHB; thyroid stimulating hormone, beta; thyrotropin subunit beta; thyrotropin beta chain; thyrotropin beta subunit; thyroid-stimulating hormone subunit beta; TSH-B; TSH-BETA
Gene ID	7252
mRNA Refseq	NM_000549
Protein Refseq	NP_000540

 Tel: 1-631-559-9269 1-516-512-3133

 Email: info@creative-biomart.com  Fax: 1-631-938-8127

 45-1 Ramsey Road, Shirley, NY 11967, USA

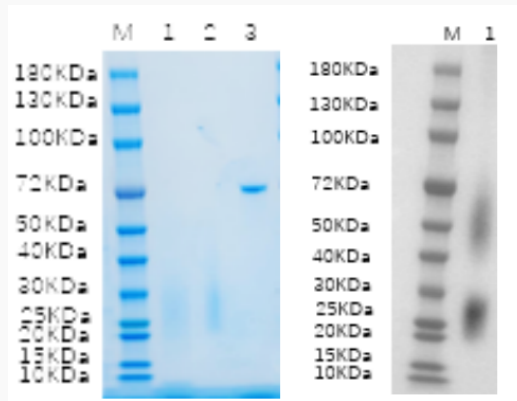
MIM	188540
UniProt ID	P01222
Gene Name 2	CGA glycoprotein hormones, alpha polypeptide [Homo sapiens (human)]
Official Symbol 2	TSHA
Synonyms 2	CGA; glycoprotein hormones, alpha polypeptide; HCG; LHA; FSHA; GPA1; GPHa; TSHA; GPHA1; CG-ALPHA; glycoprotein hormones alpha chain; FSH-alpha; LSH-alpha; TSH-alpha; anterior pituitary glycoprotein hormones common subunit alpha; choriogonadotropin alpha chain; chorionic gonadotrophin subunit alpha; chorionic gonadotropin, alpha polypeptide; follicle-stimulating hormone alpha chain; follicle-stimulating hormone alpha subunit; follitropin alpha chain; luteinizing hormone alpha chain; lutropin alpha chain; thyroid-stimulating hormone alpha chain; thyrotropin alpha chain
mRNA Refseq 2	NM_000735
Protein Refseq 2	NP_000726
MIM 2	118850
UniProt ID 2	P01215
Gene ID 2	1081

 Tel: 1-631-559-9269 1-516-512-3133

 Email: info@creative-biomart.com  Fax: 1-631-938-8127

 45-1 Ramsey Road, Shirley, NY 11967, USA

**Reducing 4%-20%
SDS-PAGE (CBB
stained) and WB
(Anti-His Mouse
Monoclonal
antibody) analysis
profiles of purified
TSHB-TSHA**



1. TSHB-TSHA-08HM-Reduced: 1 μ g 2. TSHB-TSHA-08HM-non-reduced: 1 μ g 3.
BSA: 1 μ g

 Tel: 1-631-559-9269 1-516-512-3133

 Email: info@creative-biomart.com  Fax: 1-631-938-8127

 45-1 Ramsey Road, Shirley, NY 11967, USA