

Recombinant Human TSHR Protein, Myc/DDK-tagged, C13 and N15-labeled

Cat. No. TSHR-6685H **Lot. No.** (See product label)

SPECIFICATION

Product Overview	TSHR MS Standard C13 and N15-labeled recombinant protein (NP_001136098) with a C-terminal MYC/DDK tag, was expressed in HEK293 cells.
Species	Human
Source	HEK293
Description	The protein encoded by this gene is a membrane protein and a major controller of thyroid cell metabolism. The encoded protein is a receptor for thyrothropin and thyrostimulin, and its activity is mediated by adenylate cyclase. Defects in this gene are a cause of several types of hyperthyroidism. Three transcript variants encoding different isoforms have been found for this gene.
Molecular Mass	30.8 kDa
AA Sequence	MRPADLLQLVLLLDLPRDLGGMGCSSPPCECHQEEDFRVTCKDIQRIPSLPPSTQTL KLIETHLRTIPSHAFSNLPNISRIYVSIDVTLQQLESHSFYNLSKVTHIEIRNTRNLTYID PDALKELPLLKFLGIFNTGLKMFPDLTKVYSTDIFFILEITDNPYMTSIPVNAFQGLCNE TLTLKLYNNGFTSVQGYAFNGTKLDAVYLNKNKYLTVIDKDAFGGVYSGPSSLVENV AVSGKGFCKSLFSWLYRLPLGRKSLSFETQKAPRSSMPSTRTRPLEQKLISEEDLAA NDILDYKDDDDKV
Purity	> 80% as determined by SDS-PAGE and Coomassie blue staining

 Tel: 1-631-559-9269 1-516-512-3133

 Email: info@creative-biomart.com  Fax: 1-631-938-8127

 45-1 Ramsey Road, Shirley, NY 11967, USA

Stability	Stable for 3 months from receipt of products under proper storage and handling conditions.
Storage	Store at -80 centigrade. Avoid repeated freeze-thaw cycles.
Concentration	50 µg/mL as determined by BCA
Storage Buffer	100 mM glycine, 25 mM Tris-HCl, pH 7.3.

GENE INFORMATION

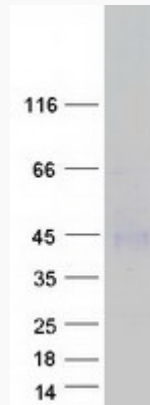
Gene Name	TSHR thyroid stimulating hormone receptor [Homo sapiens (human)]
Official Symbol	TSHR
Synonyms	TSHR; thyroid stimulating hormone receptor; thyrotropin receptor; LGR3; TSH-R; thyrotropin receptor-I, hTSHR-I; seven transmembrane helix receptor; thyroid-stimulating hormone receptor; thyroid stimulating hormone receptor, isoform 2; CHNG1; hTSHR-I; MGC75129;
Gene ID	7253
mRNA Refseq	NM_001142626
Protein Refseq	NP_001136098
MIM	603372
UniProt ID	P16473

 Tel: 1-631-559-9269 1-516-512-3133

 Email: info@creative-biomart.com  Fax: 1-631-938-8127

 45-1 Ramsey Road, Shirley, NY 11967, USA

SDS-PAGE



 Tel: 1-631-559-9269 1-516-512-3133

 Email: info@creative-biomart.com  Fax: 1-631-938-8127

 45-1 Ramsey Road, Shirley, NY 11967, USA