

Recombinant Human TSKU Protein, GST-tagged

Cat. No. TSKU-4653H Lot. No. (See product label)

SPECIFICATION

Product Overview	Human LRRC54 full-length ORF (AAH20975, 1 a.a. - 353 a.a.) recombinant protein with GST-tag at N-terminal.
Species	Human
Source	Wheat Germ
Description	TSKU (Tsukushi, Small Leucine Rich Proteoglycan) is a Protein Coding gene. Among its related pathways are Ectoderm Differentiation.
Molecular Mass	64.46 kDa
AA Sequence	MPWPLLLLLAVSGAQTRPCFPGCQCEVETFGLFDSFSLTRVDCSGLGPHIMPVPIP LDTAHLDLSSNRLEMVNESVLAGPGYTTLAGLDLSHNLLTSISPTAFSRLRYLESDDL SHNGLTALPAESFTSSPLSDVNLSHNQLREVSVSFAFTTHSQGRALHVDLSHNLHRL VPHPTRAGLPAPTIQSLNLAWNRLHAVPNLRDLPLRYLSLDGNPLAVIGPGAFAGLG GLTHLSLASLQRLPELAPSGFRELPGLQVLDLSGNPKLNWAGAEVFSGLSSLQELDL SGTNLVPLPEALLLHLPALQSVSVGQDVRCRRLVREGTYPRRPGSSPKVALHCVDL RDSAARGPTIL
Applications	Enzyme-linked Immunoabsorbent Assay Western Blot (Recombinant protein) Antibody Production Protein Array

 Tel: 1-631-559-9269 1-516-512-3133

 Email: info@creative-biomart.com  Fax: 1-631-938-8127

 45-1 Ramsey Road, Shirley, NY 11967, USA

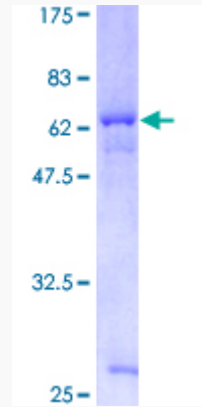
Notes	Best use within three months from the date of receipt of this protein.
Storage	Store at -80 centigrade. Aliquot to avoid repeated freezing and thawing.
Storage Buffer	50 mM Tris-HCl, 10 mM reduced Glutathione, pH=8.0 in the elution buffer.
GENE INFORMATION	
Gene Name	TSKU tsukushi small leucine rich proteoglycan homolog (Xenopus laevis) [Homo sapiens]
Official Symbol	TSKU
Synonyms	TSKU; tsukushi small leucine rich proteoglycan homolog (Xenopus laevis); leucine rich repeat containing 54 , LRRC54, tsukushin; tsukushin; E2IG4; TSK; tsukushi homolog; E2-induced gene 4 protein; leucine rich repeat containing 54; leucine-rich repeat-containing protein 54; tsukushi, small leucine rich proteoglycan; LRRC54;
Gene ID	25987
mRNA Refseq	NM_001258210
Protein Refseq	NP_001245139
MIM	608015
UniProt ID	Q8WUA8

 Tel: 1-631-559-9269 1-516-512-3133

 Email: info@creative-biomart.com  Fax: 1-631-938-8127

 45-1 Ramsey Road, Shirley, NY 11967, USA

**Quality Control
Testing**



12.5% SDS-PAGE Stained with Coomassie Blue

 Tel: 1-631-559-9269 1-516-512-3133

 Email: info@creative-biomart.com  Fax: 1-631-938-8127

 45-1 Ramsey Road, Shirley, NY 11967, USA