

# Active Recombinant Human TSLP Protein, His-tagged, R127A, R130A

**Cat. No.** TSLP-139H    **Lot. No.** (See product label)

## SPECIFICATION

<b>Product Overview</b>	Recombinant Human TSLP protein (Q969D9) (Tyr29-Gln159, with mutation R127A and R130A) is produced by HEK293 Cells expression system. This protein is fused with a His tag at the C-terminus. It is identical to TSLP with mutation R127A and R130A in the reference.
<b>Species</b>	Human
<b>Source</b>	HEK293
<b>ProteinLength</b>	Tyr29-Gln159
<b>Form</b>	Lyophilized from 0.22 µm filtered solution in PBS, pH7.4. Normally trehalose is added as protectant before lyophilization.
<b>Bio-activity</b>	Immobilized Human TSLP R, Fc Tag at 5 µg/mL (100 µL/well) can bind Human TSLP (R127A, R130A) with a linear range of 0.8-6 ng/mL. Immobilized Human TSLP (R127A, R130A) at 1 µg/mL (100 µL/well) can bind Anti-TSLP, Human IgG2 with a linear range of 0.4-3 ng/mL.
<b>Molecular Mass</b>	The protein has a calculated MW of 16.7 kDa. The protein migrates as 22-27 kDa under reducing (R) condition (SDS-PAGE) due to glycosylation.
<b>Endotoxin</b>	< 1.0 EU per µg by the LAL method.

 Tel: 1-631-559-9269    1-516-512-3133

 Email: [info@creative-biomart.com](mailto:info@creative-biomart.com)     Fax: 1-631-938-8127

 45-1 Ramsey Road, Shirley, NY 11967, USA

**Purity** > 90% as determined by SDS-PAGE.

**Storage** For long term storage, the product should be stored at lyophilized state at -20 centigrade or lower.  
Please avoid repeated freeze-thaw cycles.  
No activity loss is observed after storage at:  
4-8 centigrade for 12 months in lyophilized state;  
-70 centigrade for 3 months under sterile conditions after reconstitution.

## GENE INFORMATION

**Gene Name** TSLP thymic stromal lymphopoietin [ Homo sapiens ]

**Official Symbol** TSLP

**Synonyms** TSLP; thymic stromal lymphopoietin;

**Gene ID** 85480

**mRNA Refseq** NM\_033035

**Protein Refseq** NP\_149024

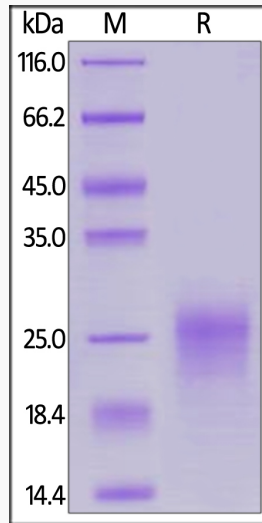
**MIM** 607003

**UniProt ID** Q969D9

 Tel: 1-631-559-9269 1-516-512-3133

 Email: [info@creative-biomart.com](mailto:info@creative-biomart.com)  Fax: 1-631-938-8127

 45-1 Ramsey Road, Shirley, NY 11967, USA



Tel: 1-631-559-9269 1-516-512-3133

Email: [info@creative-biomart.com](mailto:info@creative-biomart.com) Fax: 1-631-938-8127

45-1 Ramsey Road, Shirley, NY 11967, USA