

Recombinant Human TSLP protein, His-tagged

Cat. No. TSLP-372H **Lot. No.** (See product label)

SPECIFICATION

Product Overview	Recombinant Human TSLP protein (Tyr29-Gln159), fused to His tag at C-terminus, was expressed in human 293 cells (HEK293).
Species	Human
Source	HEK293
ProteinLength	131
Description	Thymic stromal lymphopoietin (TSLP) is an epithelial cell-derived cytokine involved in the pathology of inflammatory skin diseases, and is widely expressed by epithelial cells. Human TSLP cDNA encodes a 159 amino acid (aa) residue precursor protein with a 28 aa signal sequence (4, 5). Human TSLP has been shown to developing nondeletional central tolerance, amplifying epithelium-induced class switching, inducing atopic diseases and maintaining intestinal noninflammatory environment. Among diverse cells responding to Human TSLP, CD11c+ dendritic cells are the most obviously characterized target cells.
Form	Lyophilized from 0.22 um filtered solution in PBS, pH7.4, 10% trehalose.
Molecular Mass	The protein has a calculated MW of 16.8 kDa. The protein migrates as 8 kDa and 14-20 kDa under reducing (R) condition (SDS-PAGE) due to glycosylation.
Endotoxin	Less than 1.0 EU per ug by the LAL method.

 Tel: 1-631-559-9269 1-516-512-3133

 Email: info@creative-biomart.com  Fax: 1-631-938-8127

 45-1 Ramsey Road, Shirley, NY 11967, USA

Purity	>90% as determined by SDS-PAGE.
Storage	<p>For long term storage, the product should be stored at lyophilized state at -20 centigrade or lower.</p> <p>Please avoid repeated freeze-thaw cycles.</p> <p>This product is stable after storage at:</p> <p>-20 centigrade to -70 centigrade for 12 months in lyophilized state; -70 centigrade for 3 months under sterile conditions after reconstitution.</p>
Reconstitution	It is recommended that sterile water be added to the vial to prepare a stock solution of 0.2 ug/ul. Centrifuge the vial at 4°C before opening to recover the entire contents.

GENE INFORMATION

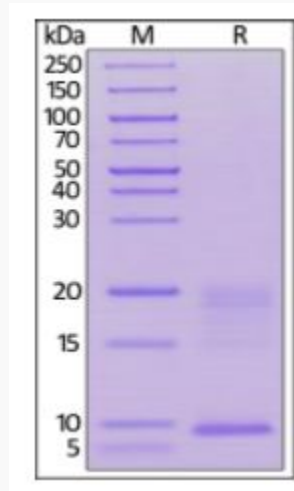
Gene Name	TSLP
Official Symbol	TSLP
Synonyms	TSLP; thymic stromal lymphopoietin
Gene ID	85480
mRNA Refseq	NM_033035
Protein Refseq	NP_149024
MIM	607003
UniProt ID	Q969D9

 Tel: 1-631-559-9269 1-516-512-3133

 Email: info@creative-biomart.com  Fax: 1-631-938-8127

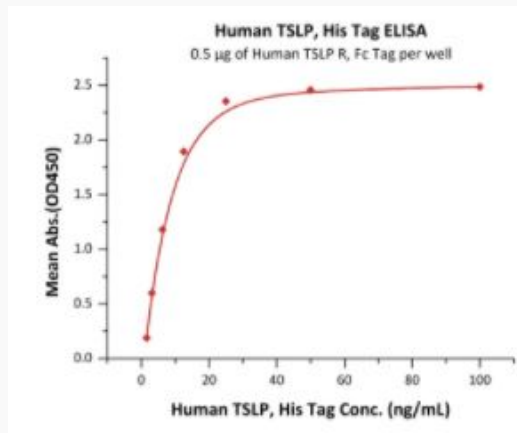
 45-1 Ramsey Road, Shirley, NY 11967, USA

SDS-PAGE of TSLP-372H



Human TSLP, His Tag on SDS-PAGE under reducing (R) condition. The gel was stained overnight with Coomassie Blue. The purity of the protein is greater than 90%.

Bioactivity-ELISA of TSLP-372H



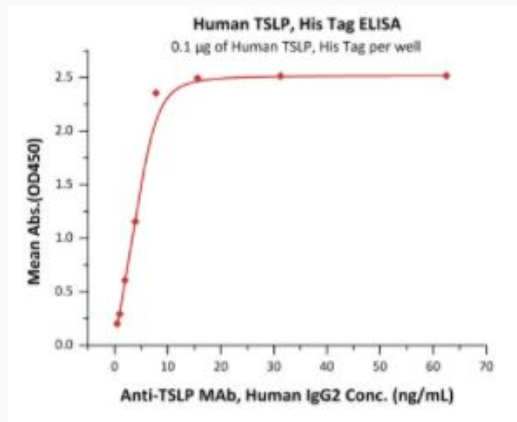
Immobilized Human TSLPR, Fc Tag at 5 µg/mL (100 µL/well) can bind Human TSLP, His Tag with a linear range of 1.6-13 ng/mL (QC tested).

Tel: 1-631-559-9269 1-516-512-3133

Email: info@creative-biomart.com Fax: 1-631-938-8127

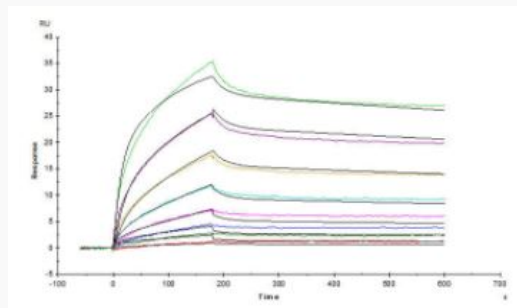
45-1 Ramsey Road, Shirley, NY 11967, USA

**Bioactivity-ELISA of
TSLP-372H**




Immobilized Human TSLP, His Tag at 1 µg/mL (100 µL/well) can bind Anti-TSLP MAb, Human IgG2 with a linear range of 0.5-8 ng/mL (Routinely tested).


**Bioactivity-SPR of
TSLP-372H**



Captured Human TSLP, His Tag on CM5 Chip via anti-His antibody, can bind Human TSLP R, Fc Tag with an affinity constant of 1.81 nM as determined in SPR assay (Routinely tested).

 Tel: 1-631-559-9269 1-516-512-3133

 Email: info@creative-biomart.com  Fax: 1-631-938-8127

 45-1 Ramsey Road, Shirley, NY 11967, USA