

# Recombinant Cynomolgus TSLP protein, His-tagged, Biotinylated, Primary Amine Labeling

**Cat. No.** TSLP-5742C    **Lot. No.** (See product label)

## SPECIFICATION

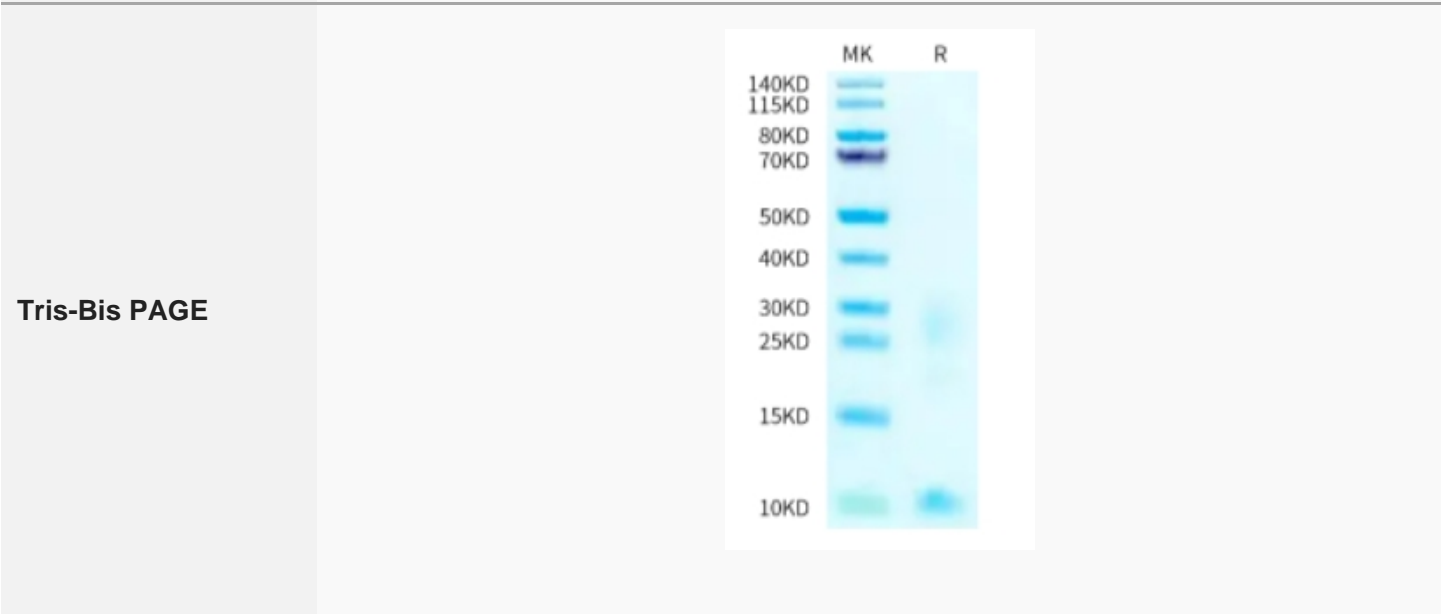
<b>Product Overview</b>	Primary Amine Labeling Biotinylated Recombinant Cynomolgus TSLP protein(A0A2K5TXV0-1)(Tyr29-Gln159), fused with C-terminal His tag, was expressed in HEK293.
<b>Species</b>	Cynomolgus
<b>Source</b>	HEK293
<b>ProteinLength</b>	Tyr29-Gln159
<b>Tag</b>	C-His
<b>Conjugation/Label</b>	Biotin; Primary Amine Labeling
<b>Form</b>	Supplied as 0.22µm filtered solution in PBS (pH 7.4).
<b>Bio-activity</b>	Immobilized Biotinylated Cynomolgus TSLP, His Tag at 0.5ug/ml (100ul/well) on the streptavidin precoated plate (5ug/ml). Dose response curve for Anti-TSLP Antibody, hFc Tag with the EC50 of 11.2ng/ml determined by ELISA (QC Test).
<b>Molecular Mass</b>	The protein has a predicted MW of 16.3 kDa. Due to glycosylation, the protein migrates to 23-26 kDa based on Tris-Bis PAGE result.
<b>Endotoxin</b>	Less than 1EU per µg by the LAL method.

 Tel: 1-631-559-9269    1-516-512-3133

 Email: [info@creative-biomart.com](mailto:info@creative-biomart.com)     Fax: 1-631-938-8127

 45-1 Ramsey Road, Shirley, NY 11967, USA

<b>Purity</b>	> 95% as determined by Tris-Bis PAGE;> 95% as determined by HPLC
<b>Storage</b>	Valid for 12 months from date of receipt when stored at -80°C. Recommend to aliquot the protein into smaller quantities for optimal storage. Please do not repeated freeze-thaw cycles.
<b>Reconstitution</b>	It is recommended that sterile water be added to the vial to prepare a stock solution of 0.2 ug/ul. Centrifuge the vial at 4°C before opening to recover the entire contents.
<b>Conjugation</b>	Biotin



Tel: 1-631-559-9269 1-516-512-3133

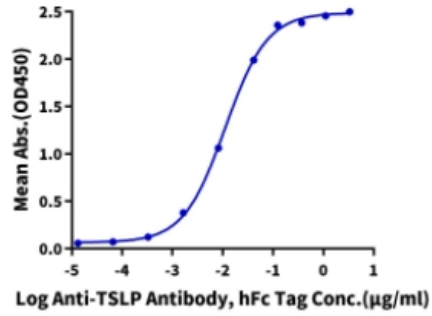
Email: [info@creative-biomart.com](mailto:info@creative-biomart.com) Fax: 1-631-938-8127

45-1 Ramsey Road, Shirley, NY 11967, USA

ELISA Data

**Biotinylated Cynomolgus TSLP, His Tag ELISA**

0.05µg Biotinylated Cynomolgus TSLP, His Tag Per Well



 Tel: 1-631-559-9269 1-516-512-3133

 Email: [info@creative-biomart.com](mailto:info@creative-biomart.com)  Fax: 1-631-938-8127

 45-1 Ramsey Road, Shirley, NY 11967, USA