

Recombinant Human TSPAN7 Protein (113-223 aa), His-tagged

Cat. No. TSPAN7-1547H Lot. No. (See product label)

SPECIFICATION

Product Overview	Recombinant Human TSPAN7 Protein (113-223 aa) is produced by Yeast expression system. This protein is fused with a 6xHis tag at the N-terminal. Research Area: Immunology. Protein Description: Partial.
Species	Human
Source	Yeast
ProteinLength	113-223 aa
Description	May be involved in cell proliferation and cell motility.
Form	Tris-based buffer,50% glycerol
Molecular Mass	14.5 kDa
AA Sequence	RHEIKDTFLRITYTDAMQTYNGNDERSRAVDHVQRSLSCCGVQNYTNWSTSPYFLE HGIPPSCCMNETDCNPQDLHNLTVAAATKVNQKGCYDLVTSFMETNMGIAGVAFGI
Purity	> 90% as determined by SDS-PAGE.
Notes	Repeated freezing and thawing is not recommended. Store working aliquots at 4 centigrade for up to one week.
Storage	The shelf life is related to many factors, storage state, buffer ingredients, storage

 Tel: 1-631-559-9269 1-516-512-3133

 Email: info@creative-biomart.com  Fax: 1-631-938-8127

 45-1 Ramsey Road, Shirley, NY 11967, USA

temperature and the stability of the protein itself. Generally, the shelf life of liquid form is 6 months at -20 centigrade/-80 centigrade. The shelf life of lyophilized form is 12 months at -20 centigrade/-80 centigrade.

Concentration A hardcopy of COA with reconstitution instruction is sent along with the products.

GENE INFORMATION

Gene Name TSPAN7 tetraspanin 7 [Homo sapiens]

Official Symbol TSPAN7

Synonyms TSPAN7; tetraspanin 7; A15; CD231; DXS1692E; TALLA 1; tspan-7; CD231 antigen; MXS1; MRX58; CCG-B7; TM4SF2; TALLA-1; TM4SF2b;

Gene ID 7102

mRNA Refseq NM_004615

Protein Refseq NP_004606

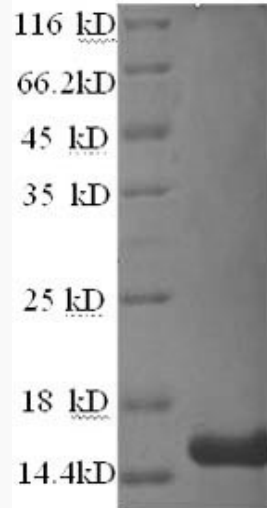
MIM 300096

UniProt ID P41732

 Tel: 1-631-559-9269 1-516-512-3133

 Email: info@creative-biomart.com  Fax: 1-631-938-8127

 45-1 Ramsey Road, Shirley, NY 11967, USA



(Tris-Glycine gel) Discontinuous SDS-PAGE (reduced) with 5% enrichment gel and 15% separation gel.

 Tel: 1-631-559-9269 1-516-512-3133

 Email: info@creative-biomart.com  Fax: 1-631-938-8127

 45-1 Ramsey Road, Shirley, NY 11967, USA