

Recombinant Human TSPAN7 protein, His-tagged

Cat. No. TSPAN7-204H Lot. No. (See product label)

SPECIFICATION

Product Overview	Recombinant Human TSPAN7 protein(AAH18036. 1) (Arg113-Met213) was expressed in HEK293 with a polyhistidine tag at the C-terminus.
Species	Human
Source	HEK293
ProteinLength	113-213 a.a.
Form	Lyophilized from sterile PBS, pH 7.4.
Molecular Mass	The recombinant human TSPAN7 consists of 112 amino acids and predicts a molecular mass of 13 KDa. It migrates as an approximately 24-30 KDa band in SDS-PAGE under reducing conditions.
Endotoxin	< 1.0 EU per µg of the protein as determined by the LAL method
Purity	> 95 % as determined by SDS-PAGE
Storage	Samples are stable for up to twelve months from date of receipt at -20°C to -80°C. Store it under sterile conditions at -20°C to -80°C. It is recommended that the protein be aliquoted for optimal storage. Avoid repeated freeze-thaw cycles.
Reconstitution	It is recommended that sterile water be added to the vial to prepare a stock solution of 0.2 ug/ul. Centrifuge the vial at 4°C before opening to recover the entire contents.

 Tel: 1-631-559-9269 1-516-512-3133

 Email: info@creative-biomart.com  Fax: 1-631-938-8127

 45-1 Ramsey Road, Shirley, NY 11967, USA

GENE INFORMATION

Gene Name TSPAN7 tetraspanin 7 [Homo sapiens]

Official Symbol TSPAN7

Synonyms TSPAN7; tetraspanin 7; mental retardation, X linked 58 , MRX58, MXS1, TM4SF2, transmembrane 4 superfamily member 2; tetraspanin-7; A15; CD231; DXS1692E; TALLA 1; tspan-7; CD231 antigen; tetraspanin protein; transmembrane protein A15; cell surface glycoprotein A15; transmembrane 4 superfamily 2b; transmembrane 4 superfamily member 2; membrane component chromosome X surface marker 1; membrane component, X chromosome, surface marker 1; T-cell acute lymphoblastic leukemia associated antigen 1; T-cell acute lymphoblastic leukemia-associated antigen 1; MXS1; MRX58; CCG-B7; TM4SF2; TALLA-1; TM4SF2b;

Gene ID 7102

mRNA Refseq NM_004615

Protein Refseq NP_004606

MIM 300096

UniProt ID P41732

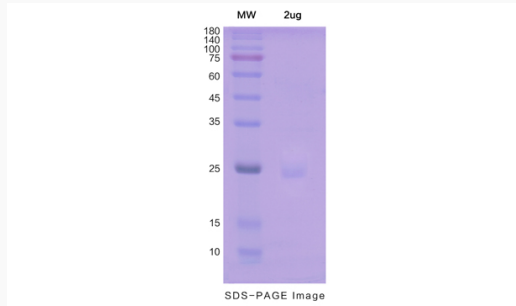
 Tel: 1-631-559-9269 1-516-512-3133

 Email: info@creative-biomart.com  Fax: 1-631-938-8127

 45-1 Ramsey Road, Shirley, NY 11967, USA



SDS-PAGE



Tel: 1-631-559-9269 1-516-512-3133

Email: info@creative-biomart.com Fax: 1-631-938-8127

45-1 Ramsey Road, Shirley, NY 11967, USA