

Recombinant Human TSPAN7 Protein (Arg113-Met213), C-His tagged

Cat. No. TSPAN7-5141H Lot. No. (See product label)

SPECIFICATION

Product Overview	Recombinant human TSPAN7 (Arg113-Met213) fused with the C-terminal His tag was expressed in Mammalian cells.
Species	Human
Source	Mammalian Cells
ProteinLength	Arg113-Met213
Form	Lyophilized powder/frozen liquid
Molecular Mass	11.11 kDa
Endotoxin	< 1.0 EU/μg of the protein as determined by the LAL method.
Purity	>90% as determined by SDS-PAGE.
Notes	For research use only.
Storage	Use a manual defrost freezer and avoid repeated freeze thaw cycles. Store at 2 to 8 centigrade for one week. Store at -20 to -80 centigrade for twelve months from the date of receipt.
Storage Buffer	Supplied as solution form in PBS or lyophilized from PBS.

 Tel: 1-631-559-9269 1-516-512-3133

 Email: info@creative-biomart.com  Fax: 1-631-938-8127

 45-1 Ramsey Road, Shirley, NY 11967, USA

Reconstitution Reconstitute in sterile water for a stock solution.

Shipping They are shipped out with dry ice/blue ice unless customers require otherwise.

GENE INFORMATION

Gene Name TSPAN7 tetraspanin 7 [Homo sapiens (human)]

Official Symbol TSPAN7

Synonyms

TSPAN7; tetraspanin 7; mental retardation, X linked 58, MRX58, MXS1, TM4SF2, transmembrane 4 superfamily member 2; tetraspanin-7; A15; CD231; DXS1692E; TALLA 1; tspan-7; CD231 antigen; tetraspanin protein; transmembrane protein A15; cell surface glycoprotein A15; transmembrane 4 superfamily 2b; transmembrane 4 superfamily member 2; membrane component chromosome X surface marker 1; membrane component, X chromosome, surface marker 1; T-cell acute lymphoblastic leukemia associated antigen 1; T-cell acute lymphoblastic leukemia-associated antigen 1; MXS1; MRX58; CCG-B7; TM4SF2; TALLA-1; TM4SF2b;

Gene ID 7102

mRNA Refseq NM_004615

Protein Refseq NP_004606

MIM 300096

UniProt ID P41732

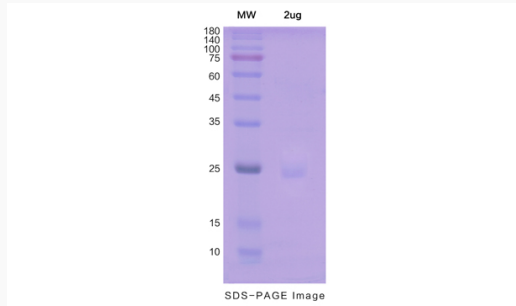
 Tel: 1-631-559-9269 1-516-512-3133

 Email: info@creative-biomart.com  Fax: 1-631-938-8127

 45-1 Ramsey Road, Shirley, NY 11967, USA



SDS-PAGE



Tel: 1-631-559-9269 1-516-512-3133

Email: info@creative-biomart.com Fax: 1-631-938-8127

45-1 Ramsey Road, Shirley, NY 11967, USA