

## Recombinant Human TSPAN7 Protein (113-213 aa), His-tagged

Cat. No. TSPAN7-843H Lot. No. (See product label)

### SPECIFICATION

<b>Product Overview</b>	Recombinant Human TSPAN7 Protein (113-213 aa) is produced by E. coli expression system. This protein is fused with a 6xHis tag at the N-terminal. Research Area: Immunology. Protein Description: Partial.
<b>Species</b>	Human
<b>Source</b>	E.coli
<b>ProteinLength</b>	113-213 aa
<b>Description</b>	May be involved in cell proliferation and cell motility.
<b>Form</b>	Tris-based buffer, 50% glycerol
<b>Molecular Mass</b>	15.6 kDa
<b>AA Sequence</b>	RHEIKDTFLRITYTDAMQTYNGNDERSRAVDHVQRSLSCCGVQNYTNWSTSPYFLE HGIPPSCCMNETDCNPQDLHNLTVAAATKVNQKGCYDLVTSFMETNM
<b>Purity</b>	> 90% as determined by SDS-PAGE.
<b>Notes</b>	Repeated freezing and thawing is not recommended. Store working aliquots at 4 centigrade for up to one week.
<b>Storage</b>	The shelf life is related to many factors, storage state, buffer ingredients, storage

 Tel: 1-631-559-9269 1-516-512-3133

 Email: [info@creative-biomart.com](mailto:info@creative-biomart.com)  Fax: 1-631-938-8127

 45-1 Ramsey Road, Shirley, NY 11967, USA

temperature and the stability of the protein itself. Generally, the shelf life of liquid form is 6 months at -20 centigrade/-80 centigrade. The shelf life of lyophilized form is 12 months at -20 centigrade/-80 centigrade.

**Concentration** A hardcopy of COA with concentration instruction is sent along with the products.

## GENE INFORMATION

**Gene Name** TSPAN7 tetraspanin 7 [ Homo sapiens ]

**Official Symbol** TSPAN7

**Synonyms** TSPAN7; A15; CD231; DXS1692E; TALLA 1; tspan-7; CD231 antigen; MXS1; MRX58; CCG-B7; TM4SF2; TALLA-1; TM4SF2b;


**Gene ID** 7102

**mRNA Refseq** NM\_004615

**Protein Refseq** NP\_004606

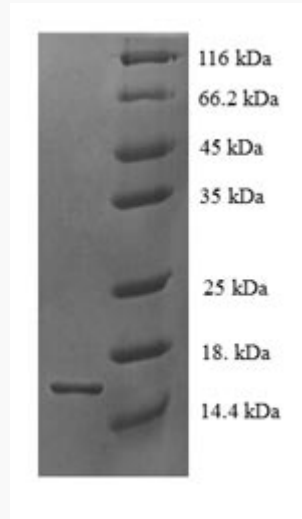
**MIM** 300096

**UniProt ID** P41732

 Tel: 1-631-559-9269 1-516-512-3133

 Email: [info@creative-biomart.com](mailto:info@creative-biomart.com)  Fax: 1-631-938-8127

 45-1 Ramsey Road, Shirley, NY 11967, USA



(Tris-Glycine gel) Discontinuous SDS-PAGE (reduced) with 5% enrichment gel and 15% separation gel.

 Tel: 1-631-559-9269 1-516-512-3133

 Email: [info@creative-biomart.com](mailto:info@creative-biomart.com)  Fax: 1-631-938-8127

 45-1 Ramsey Road, Shirley, NY 11967, USA