

Recombinant Full Length Human TTBK1 Protein, C-Flag-tagged

Cat. No. TTBK1-810HFL **Lot. No.** (See product label)

SPECIFICATION

Product Overview	Recombinant Full Length Human TTBK1 Protein, fused to Flag-tag at C-terminus, was expressed in Mammalian cells.
Species	Human
Source	Mammalian Cells
Description	This gene belongs to the casein kinase 1 superfamily. The encoded protein is a neuron-specific, serine/threonine and tyrosine kinase, which regulates phosphorylation of tau, a protein that associates with microtubule assemblies and stabilizes them. Genetic variants in this gene are associated with Alzheimer's disease.
Form	25 mM Tris HCl, pH 7.3, 100 mM glycine, 10% glycerol.
Molecular Mass	142.6 kDa
AA Sequence	<p>MQCLAAALKDETNMSGGGEQADILPANYVVKDRWKVLKKIGGGGFGEIYEAMDLLT RENVALKVESAAQP KQVLKMEVAVLKKLQGKDHVCRFIGCGRNEKFNYVVMQLQG RNLADLRRSQPRGFTTLSTTLRLGKQILE SIEAIHSVGF LHRDIKPSNFAMGRLPSTY RKYMLDFGLARQYTNTTGDVRPPRNVAGFRGTVRYASVNA HKNREMGRHDDLW SLFYMLVEFAVGQLPWRKIKDKEQVGMKEKEYEHRMLLKHMPSEFHLFLDHIASLDY FTKPDYQLIMSVFENSMKERGIAENEAFDWEKAGTDALLSTSTSTPPQQNTRQTAA MFGVNVNTPVPGDL LRENTEDVLQGEHLSAQENAPPILPGRPSEGLGSPHLPHP</p>

 Tel: 1-631-559-9269 1-516-512-3133

 Email: info@creative-biomart.com  Fax: 1-631-938-8127

 45-1 Ramsey Road, Shirley, NY 11967, USA

GGPEAEVWEETDVNRNKLRLINIGKSPCV EEEQSRGMGVPSSPVRAPPDSPTTPVR
 SLRYRRVNSPESERLSTADGRVELPERRSRMDLPGSPSRQACS SQPAQMLSVDT
 GHADRQASGRMDVSASVEQEALSNAFRSVPLAEEEDFDSKEWVIIDKETELKDFPP
 GAE PSTSGTTDEEPEELRPLPEEGEERRRLGAEPTVRPRGRSMQALAEEDLQHLF
 PQPLPPQLSQGDGRSETS QPPTPGSPSHSPLHSGPRRRRESPTGPQRQVFSV
 APPFEVNLPRAVPLSLPYQDFKRDLSDYRERAR LLNRVRRVGFHMLLTPQVPL
 APVQPQANGKEEE EAAAAVA
 LGEVLGPRSGSSSEGSESTDRSQEGAPSTLLADDQKESRGRASMADGDLEPEEG
 SKTLVLVS PGDMKKSPVTAELAPDPLGLTAAALTPQHERPQPTGSQLDVSEPGTLS
 SVLKSEPKPPGPGAGLGAGTVT TGVGGVAVTSSPFTKVERTFVHIAEKTHLNMSS
 GGQALRSEEFSAAGGELGLELASDGGAVEEGARAPLE NGLALSGLNGAEIEGSALS
 GAPRETPSEMATNSLPNGPALADGPAPVSPLEPSPEKVATISPRRHAMPGS RPRS
 RIPVLLSEEDTGSEPSGSLSAKERWSKRARPQQDLARLVMEKRQGRLLLRLASGAS
 SSSSEEQRRRA SETLSGTGSEEDTPASEPAAALPRKSGRAAATRSRIPRPIGLRMPM
 PVAAQQPASRSHGAAPALDTAITS RLQLQTPPGSATAADLRPKQPPGRGLGPGRA
 QAGARPPAPRSPRLPASTSAARNASASPRSQSLSRRESP
 SPSHQARPGVPPPRGVPPARAQPDGTPSPGGSKKGPRGKLQAQRATTKGRAGGA
 EGRAGARTRTRPLEQKLISEEDLAANDILDYKDDDDKV

Purity	> 80% as determined by SDS-PAGE and Coomassie blue staining.
Stability	Stable for 12 months from the date of receipt of the product under proper storage and handling conditions. Avoid repeated freeze-thaw cycles.
Storage	Store at -80 centigrade.
Concentration	>50 ug/mL as determined by microplate BCA method.
Preparation	Recombinant protein was captured through anti-DDK affinity column followed by conventional chromatography steps.



Protein Families Druggable Genome, Protein Kinase

Full Length Full L.

GENE INFORMATION

Gene Name [TTBK1 tau tubulin kinase 1 \[Homo sapiens \(human\) \]](#)

Official Symbol [TTBK1](#)

Synonyms BDTK

Gene ID [84630](#)

mRNA Refseq [NM_032538.3](#)

Protein Refseq [NP_115927.1](#)

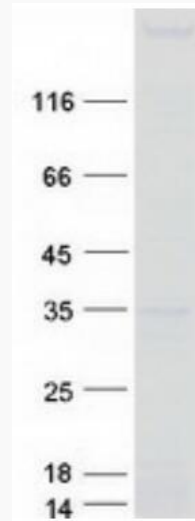
MIM [619415](#)

UniProt ID [Q5TCY1](#)

 Tel: 1-631-559-9269 1-516-512-3133

 Email: info@creative-biomart.com  Fax: 1-631-938-8127

 45-1 Ramsey Road, Shirley, NY 11967, USA



Coomassie blue staining of purified TTBK1 protein.

 Tel: 1-631-559-9269 1-516-512-3133

 Email: info@creative-biomart.com  Fax: 1-631-938-8127

 45-1 Ramsey Road, Shirley, NY 11967, USA