

Native Bovine Prealbumin protein

Cat. No. TTR-155B Lot. No. (See product label)

SPECIFICATION

Species	Bovine
Source	Bovine Serum
ProteinLength	Full length native Bovine Prealbumin protein
Description	Thyroid hormone-binding protein. Probably transports thyroxine from the bloodstream to the brain. Detected in serum and cerebrospinal fluid (at protein level). Highly expressed in choroid plexus epithelial cells. Detected in retina pigment epithelium and liver.
Form	Liquid
Purity	>95% (SDS-PAGE)
Applications	Western blotting,ELISA,etc.
Storage	Aliquot and store at -20°C or -80°C. Avoid repeated freeze / thaw cycles.
Storage Buffer	PBS

GENE INFORMATION

Gene Name TTR transthyretin [Bos taurus]

 Tel: 1-631-559-9269 1-516-512-3133

 Email: info@creative-biomart.com  Fax: 1-631-938-8127

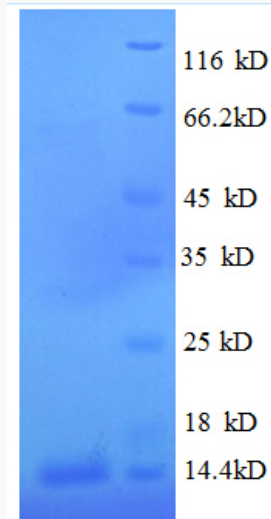
 45-1 Ramsey Road, Shirley, NY 11967, USA

Official Symbol	TTR
Synonyms	transthyretin; prealbumin; transthyretin (prealbumin, amyloidosis type I)
Gene ID	280948
mRNA Refseq	NM_173967
Protein Refseq	NP_776392
UniProt ID	O46375
Chromosome Location	chromosome: 24
Pathway	Amyloids, organism-specific biosystem; Diseases associated with visual transduction, organism-specific biosystem; Retinoid metabolism and transport, organism-specific biosystem
Function	hormone activity; identical protein binding

 Tel: 1-631-559-9269 1-516-512-3133

 Email: info@creative-biomart.com  Fax: 1-631-938-8127

 45-1 Ramsey Road, Shirley, NY 11967, USA



Tel: 1-631-559-9269 1-516-512-3133

Email: info@creative-biomart.com Fax: 1-631-938-8127

45-1 Ramsey Road, Shirley, NY 11967, USA