

## Recombinant Human TUBA1A protein, GST-tagged

Cat. No. TUBA1A-17H Lot. No. (See product label)

### SPECIFICATION

<b>Product Overview</b>	Recombinant Human TUBA1A(352 a.a. - 451 a.a.) fused with GST tag at N-terminal was expressed in Wheat Germ.
<b>Species</b>	Human
<b>Source</b>	Wheat Germ
<b>ProteinLength</b>	352-451 a.a.
<b>Form</b>	50 mM Tris-HCl, 10 mM reduced Glutathione, pH=8.0 in the elution buffer.
<b>Molecular Mass</b>	36.74 kDa
<b>AA Sequence</b>	KVGINYQPPTVVPGGDLAKVQRAVCMLSNTTAIAEAWARLDHKFDLMYAKRAFVHW YVGEGMEEGEFSEAREDMAALEKDYEYEEVGVDSVEGEGEEEGEEY
<b>Applications</b>	Enzyme-linked Immunoabsorbent Assay; Western Blot (Recombinant protein); Antibody Production; Protein Array
<b>Notes</b>	Best use within three months from the date of receipt of this protein.
<b>Storage</b>	Store at -80 centigrade. Aliquot to avoid repeated freezing and thawing.

### GENE INFORMATION

 Tel: 1-631-559-9269 1-516-512-3133

 Email: [info@creative-biomart.com](mailto:info@creative-biomart.com)  Fax: 1-631-938-8127

 45-1 Ramsey Road, Shirley, NY 11967, USA

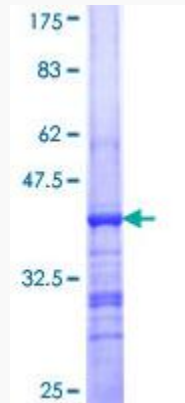


<b>Gene Name</b>	TUBA1A tubulin, alpha 1a [ Homo sapiens ]
<b>Official Symbol</b>	TUBA1A
<b>Synonyms</b>	TUBA1A; tubulin, alpha 1a; tubulin alpha-1A chain; B ALPHA 1; FLJ25113; TUBA3; tubulin; alpha; brain specific; hum-a-tub1; hum-a-tub2; alpha-tubulin 3; tubulin, alpha 3; tubulin B-alpha-1; tubulin alpha-3 chain; tubulin, alpha, brain-specific; LIS3; B-ALPHA-1;
<b>Gene ID</b>	7846
<b>mRNA Refseq</b>	NM_006009
<b>Protein Refseq</b>	NP_006000
<b>MIM</b>	602529
<b>UniProt ID</b>	Q71U36
<b>Chromosome Location</b>	12q13.12
<b>Pathway</b>	Cell Cycle, organism-specific biosystem; Cell Cycle, Mitotic, organism-specific biosystem; Centrosome maturation, organism-specific biosystem; Chaperonin-mediated protein folding, organism-specific biosystem; Cooperation of Prefoldin and TriC/CCTin actin and tubulin folding, organism-specific biosystem; Formation of tubulin folding intermediates by CCT/TriC, organism-specific biosystem; G2/M Transition, organism-specific biosystem;
<b>Function</b>	GTP binding; GTPase activity; nucleotide binding; protein domain specific binding; structural molecule activity;

Tel: 1-631-559-9269 1-516-512-3133

Email: [info@creative-biomart.com](mailto:info@creative-biomart.com) Fax: 1-631-938-8127

45-1 Ramsey Road, Shirley, NY 11967, USA



 Tel: 1-631-559-9269 1-516-512-3133

 Email: [info@creative-biomart.com](mailto:info@creative-biomart.com)  Fax: 1-631-938-8127

 45-1 Ramsey Road, Shirley, NY 11967, USA