

Recombinant Human TUBA1A protein, GST-tagged

Cat. No. TUBA1A-18H Lot. No. (See product label)

SPECIFICATION

Product Overview	Recombinant Human TUBA1A(1 a.a. - 451 a.a.) fused with GST tag at N-terminal was expressed in Wheat Germ.
Species	Human
Source	Wheat Germ
ProteinLength	1-451 a.a.
Form	50 mM Tris-HCl, 10 mM reduced Glutathione, pH=8.0 in the elution buffer.
Molecular Mass	75.24 kDa
AA Sequence	MRECISIHVGGQAGVQIGNACWELCYCLEHGIQPDGQMPSDKTIGGGDDSFNTFFSET GAGKHVPRAVFVDLEPTVIDEVRTGTYRQLFHPEQLITGKEDAANNYARGHYTIGKEI IDLVLDRIRKLADQCTGLQGFLVFHSFGGGTGSGFTSLLMERLSVDYGGKSKLEFSIY PAPQVSTAVVEPYNSILTTHTTLEHSDCAFMDNEAIYDICRRNLDIERPTYTNLNRLI GQIVSSITASLRFDGALNVDLTEFQTNLVPYPRIFPLATYAPVISA EKAYHEQLSVAEI TNACFEPANQMVKCDPRHGKYM ACCLLYRGDVV PKDVNAAIATIKTKRTIQFVDWC PTGFKVGINYQPPTVVPGGDLAKVQRAVCMLSNTTAIAEAWARLDHKFDL MYAKRA FVHWYV GEGMEEGEFSEAREDMAALEKDYEEVGVDSVEGEGEEEGEEY
Applications	Enzyme-linked Immunoabsorbent Assay; Western Blot (Recombinant protein); Antibody Production; Protein Array

Tel: 1-631-559-9269 1-516-512-3133

Email: info@creative-biomart.com Fax: 1-631-938-8127

45-1 Ramsey Road, Shirley, NY 11967, USA

Notes Best use within three months from the date of receipt of this protein.

Storage Store at -80 centigrade. Aliquot to avoid repeated freezing and thawing.

GENE INFORMATION

Gene Name TUBA1A tubulin, alpha 1a [Homo sapiens]

Official Symbol TUBA1A

Synonyms TUBA1A; tubulin, alpha 1a; tubulin alpha-1A chain; B ALPHA 1; FLJ25113; TUBA3; tubulin; alpha; brain specific; hum-a-tub1; hum-a-tub2; alpha-tubulin 3; tubulin, alpha 3; tubulin B-alpha-1; tubulin alpha-3 chain; tubulin, alpha, brain-specific; LIS3; B-ALPHA-1;

Gene ID 7846

mRNA Refseq NM_006009

Protein Refseq NP_006000

MIM 602529

UniProt ID Q71U36

Chromosome Location 12q13.12

Pathway Cell Cycle, organism-specific biosystem; Cell Cycle, Mitotic, organism-specific biosystem; Centrosome maturation, organism-specific biosystem; Chaperonin-mediated protein folding, organism-specific biosystem; Cooperation of Prefoldin and

 Tel: 1-631-559-9269 1-516-512-3133

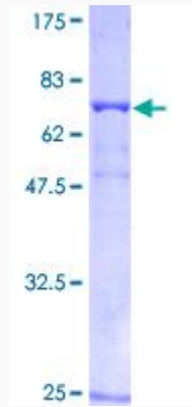
 Email: info@creative-biomart.com  Fax: 1-631-938-8127

 45-1 Ramsey Road, Shirley, NY 11967, USA

TriC/CCTin actin and tubulin folding, organism-specific biosystem; Formation of tubulin folding intermediates by CCT/TriC, organism-specific biosystem; G2/M Transition, organism-specific biosystem;

Function

GTP binding; GTPase activity; nucleotide binding; protein domain specific binding; structural molecule activity;



Tel: 1-631-559-9269 1-516-512-3133

Email: info@creative-biomart.com Fax: 1-631-938-8127

45-1 Ramsey Road, Shirley, NY 11967, USA