

Recombinant Full Length Human TUBA1A Protein, C-Flag-tagged

Cat. No. TUBA1A-194HFL Lot. No. (See product label)

SPECIFICATION

Product Overview

Recombinant Full Length Human TUBA1A Protein, fused to Flag-tag at C-terminus, was expressed in Mammalian cells.

Species

Human

Source

Mammalian Cells

Description

Microtubules of the eukaryotic cytoskeleton perform essential and diverse functions and are composed of a heterodimer of alpha and beta tubulins. The genes encoding these microtubule constituents belong to the tubulin superfamily, which is composed of six distinct families. Genes from the alpha, beta and gamma tubulin families are found in all eukaryotes. The alpha and beta tubulins represent the major components of microtubules, while gamma tubulin plays a critical role in the nucleation of microtubule assembly. There are multiple alpha and beta tubulin genes, which are highly conserved among species. This gene encodes alpha tubulin and is highly similar to the mouse and rat Tuba1 genes. Northern blot studies have shown that the gene expression is predominantly found in morphologically differentiated neurologic cells. This gene is one of three alpha-tubulin genes in a cluster on chromosome 12q. Mutations in this gene cause lissencephaly type 3 (LIS3) - a neurological condition characterized by microcephaly, intellectual disability, and early-onset epilepsy caused by defective neuronal migration. Alternative splicing results in multiple transcript variants encoding distinct isoforms.

 Tel: 1-631-559-9269 1-516-512-3133

 Email: info@creative-biomart.com  Fax: 1-631-938-8127

 45-1 Ramsey Road, Shirley, NY 11967, USA

Form	25 mM Tris HCl, pH 7.3, 100 mM glycine, 10% glycerol.
Molecular Mass	50 kDa
AA Sequence	<p>MRECISIHVGQAGVQIGNACWELYCLEHGIQPDGQMPSDKTIGGGDDSFNTFFSET GAGKHVPRAVFVDL EPTVIDEVRTGTyrQLFHPEQLITGKEDAANNYARGHYTIGKE IIDLVLDRIKRLADQCTGLQGFLVFHS FGGGTGSGFTSLLMERLSVDYGGKSKLEFSI YPAPQVSTAVVEPYNSILTTHTTLEHSDCAFMDNEAIY DICRRNLDIERPTYTNLNR LIGQIVSSITASLRFDGALNVDLTEFQTNLVPYPRIHFPLATYAPVISA EK AYHEQLSV AEITNACFEPANQMVKCDPRHGKYMACCLLYRGDVVPKDVNAAIATIKTKRTIQFVD WCPTG FKVGINYPPTVVPGGDLAKVQRAVCMLSNTTAIAEAWARLDHKFDLMYA KRAVHWYVGE GMEEGEFSE AREDMAALEKDYEEVGVDSVEGEGEEEGEEYTRTRPLEQKLISEEDLAANDILDYKD DDDKV</p>
Purity	> 80% as determined by SDS-PAGE and Coomassie blue staining.
Stability	Stable for 12 months from the date of receipt of the product under proper storage and handling conditions. Avoid repeated freeze-thaw cycles.
Storage	Store at -80 centigrade.
Concentration	>50 ug/mL as determined by microplate BCA method.
Preparation	Recombinant protein was captured through anti-DDK affinity column followed by conventional chromatography steps.
Protein Families	Druggable Genome
Protein Pathways	Gap junction, Pathogenic Escherichia coli infection

 Tel: 1-631-559-9269 1-516-512-3133

 Email: info@creative-biomart.com  Fax: 1-631-938-8127

 45-1 Ramsey Road, Shirley, NY 11967, USA

Full Length Full L.

GENE INFORMATION

Gene Name TUBA1A tubulin alpha 1a [Homo sapiens (human)]

Official Symbol TUBA1A

Synonyms B-ALPHA-1; LIS3; TUBA3

Gene ID 7846

mRNA Refseq NM_006009.4

Protein Refseq NP_006000.2

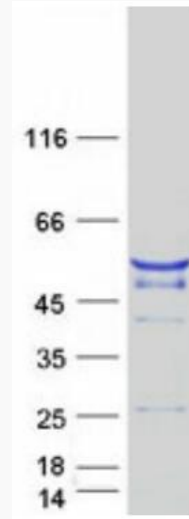
MIM 602529

UniProt ID Q71U36


 Tel: 1-631-559-9269 1-516-512-3133

 Email: info@creative-biomart.com  Fax: 1-631-938-8127

 45-1 Ramsey Road, Shirley, NY 11967, USA



Coomassie blue staining of purified TUBA1A protein.

 Tel: 1-631-559-9269 1-516-512-3133

 Email: info@creative-biomart.com  Fax: 1-631-938-8127

 45-1 Ramsey Road, Shirley, NY 11967, USA