

Recombinant Human TUBA1B protein, His-tagged

Cat. No. TUBA1B-3469H Lot. No. (See product label)

SPECIFICATION

Product Overview	Recombinant Human TUBA1B protein(1-449 aa), fused with N-terminal His tag, was expressed in E. coli.
ProteinLength	1-449 aa
Tag	N-His
Form	The purified protein was Lyophilized from sterile PBS (58mM Na ₂ HPO ₄ , 17mM NaH ₂ PO ₄ , 68mM NaCl, pH7.4). 5 % trehalose and 5 % mannitol are added as protectant before lyophilization.
Purity	85%, by SDS-PAGE with Coomassie Brilliant Blue staining.
Storage	Short-term storage: Store at 2-8°C for (1-2 weeks). Long-term storage: Aliquot and store at -20°C to -80°C for up to 3 months, reconstitution with sterile water and addition of an equal volume of glycerol. Avoid repeat freeze-thaw cycles.
Reconstitution	Reconstitute at 0.25 µg/µl in 200 µl sterile water for short-term storage. After reconstitution with sterile water, if glycerol has no effect on subsequent experiments, it is recommended to add an equal volume of glycerol for long-term storage.
AA Sequence	MRECISIHVGQAGVQIGNACWELCYCLEHGIQPDGQMPSDKTIGGGDDSFNTFFSET GAGKHVPRAVFVDLEPTVIDEVRTGTYRQLFHPEQLITGKEDAANNYARGHYTIGKEI IDLVLDRIRKLDQCTGLQGFLVFHSGGGTGSGFTSLLMERLSVDYGGKSKLEFSIY PAPQVSTAVVEPYNSILTTHTTLEHSDCAFMVDNEAIYDICRRNLDIERPTYTNLRLI

 Tel: 1-631-559-9269 1-516-512-3133

 Email: info@creative-biomart.com  Fax: 1-631-938-8127

 45-1 Ramsey Road, Shirley, NY 11967, USA

SQIVSSITASLRFDGALNVDLTEFQTNLVPYPRIHFPLATYAPVISA EKAYHEQLTVAEI
 TNACFEPANQMVKCDPRHGKYM ACCLLYRGDVVPKDVNAAIATIKTKRTIQFVDWC
 PTGFKVGINYQPPTVVPGGDLAKVQRAVCMLSNTTAVAEAWARLDHKFDLMYAKRA
 FVHWYVGEEMEEGEFSEAREDMAALEKDYEVEVGADSADGEDEGE EY

GENE INFORMATION

Gene Name TUBA1B tubulin, alpha 1b [Homo sapiens]

Official Symbol TUBA1B

Synonyms TUBA1B; tubulin, alpha 1b; tubulin alpha-1B chain; K ALPHA 1; tubulin; alpha; ubiquitous; alpha tubulin; tubulin K-alpha-1; alpha-tubulin ubiquitous; tubulin, alpha, ubiquitous; tubulin alpha-ubiquitous chain; K-ALPHA-1;

Gene ID 10376

mRNA Refseq NM_006082

Protein Refseq NP_006073

MIM 602530

UniProt ID P68363

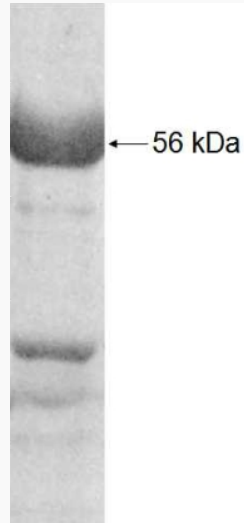
 Tel: 1-631-559-9269 1-516-512-3133

 Email: info@creative-biomart.com  Fax: 1-631-938-8127

 45-1 Ramsey Road, Shirley, NY 11967, USA



SDS-PAGE



Tel: 1-631-559-9269 1-516-512-3133

Email: info@creative-biomart.com Fax: 1-631-938-8127

45-1 Ramsey Road, Shirley, NY 11967, USA