

# Recombinant Full Length Human TUBA1B Protein, His-tagged

Cat. No. TUBA1B-508H Lot. No. (See product label)

## SPECIFICATION

<b>Product Overview</b>	Recombinant Human TUBA1B Protein (Met1-Tyr451) with N-His tag was expressed in E. coli.
<b>Species</b>	Human
<b>Source</b>	E.coli
<b>ProteinLength</b>	Met1-Tyr451
<b>Description</b>	Enables double-stranded RNA binding activity and ubiquitin protein ligase binding activity. Predicted to be involved in microtubule cytoskeleton organization and mitotic cell cycle. Predicted to act upstream of or within cellular response to interleukin-4. Located in microtubule.
<b>Form</b>	Freeze-dried powder
<b>Molecular Mass</b>	Predicted Molecular Mass: 53.7 kDa Accurate Molecular Mass: 54 kDa
<b>Purity</b>	> 90%
<b>Applications</b>	Positive Control; Immunogen; SDS-PAGE; WB.
<b>Stability</b>	The thermal stability is described by the loss rate. The loss rate was determined by accelerated thermal degradation test, that is, incubate the protein at 37 centigrade for

 Tel: 1-631-559-9269 1-516-512-3133

 Email: [info@creative-biomart.com](mailto:info@creative-biomart.com)  Fax: 1-631-938-8127

 45-1 Ramsey Road, Shirley, NY 11967, USA

48h, and no obvious degradation and precipitation were observed. The loss rate is less than 5% within the expiration date under appropriate storage condition.

**Storage**

Avoid repeated freeze/thaw cycles. Store at 2-8 centigrade for one month. Aliquot and store at -80 centigrade for 12 months.

**Storage Buffer**

20mM Tris, 150mM NaCl, pH8.0, containing 1mM EDTA, 1mM DTT, 0.01% SKL, 5% Trehalose and Proclin300.

**Reconstitution**

Reconstitute in sterile water to a concentration of 0.1-1.0 mg/mL. Do not vortex.

## GENE INFORMATION

**Gene Name**

TUBA1B tubulin, alpha 1b [ Homo sapiens (human) ]

**Official Symbol**

TUBA1B

**Synonyms**

TUBA1B; tubulin, alpha 1b; tubulin alpha-1B chain; K ALPHA 1; tubulin; alpha; ubiquitous; alpha tubulin; tubulin K-alpha-1; alpha-tubulin ubiquitous; tubulin, alpha, ubiquitous; tubulin alpha-ubiquitous chain; K-ALPHA-1

**Gene ID**

10376

**mRNA Refseq**

NM\_006082

**Protein Refseq**

NP\_006073

**MIM**

602530

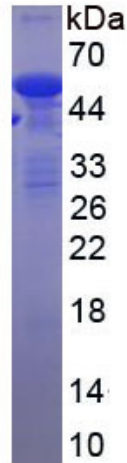
**UniProt ID**

P68363

 Tel: 1-631-559-9269 1-516-512-3133

 Email: [info@creative-biomart.com](mailto:info@creative-biomart.com)  Fax: 1-631-938-8127

 45-1 Ramsey Road, Shirley, NY 11967, USA



Tel: 1-631-559-9269 1-516-512-3133

Email: [info@creative-biomart.com](mailto:info@creative-biomart.com) Fax: 1-631-938-8127

45-1 Ramsey Road, Shirley, NY 11967, USA