

Recombinant Full Length Human TUBB Protein, C-Flag-tagged

Cat. No. TUBB-100HFL Lot. No. (See product label)

SPECIFICATION

Product Overview	Recombinant Full Length Human TUBB Protein, fused to Flag-tag at C-terminus, was expressed in Mammalian cells.
Species	Human
Source	Mammalian Cells
Description	This gene encodes a beta tubulin protein. This protein forms a dimer with alpha tubulin and acts as a structural component of microtubules. Mutations in this gene cause cortical dysplasia, complex, with other brain malformations 6. Alternative splicing results in multiple splice variants. There are multiple pseudogenes for this gene on chromosomes 1, 6, 7, 8, 9, and 13.
Form	25 mM Tris HCl, pH 7.3, 100 mM glycine, 10% glycerol.
Molecular Mass	49.5 kDa
AA Sequence	MREIVHIQAGQCQGNQIGAKFWEVISDEHGIDPTGTYHGDSLQLDRISVYYNEATGG KYVPRAILVDLEP GTMDSVRSRGPFGQIFRPDNFVFGQSGAGNNWAKGHYTEGAEL VDSVLDVVRKEAESCDCLQGFQLTHSLG GGTGSGMGTLLISKIREEYPDRIMNTFS VVPSPKVS DTVVEPYNATLSVHQLVENTDETYCIDNEALYDI CFRTLKLTPTYGDLN HLVSATMSGVTTCLRFPGQLNADLRKLA VNMVFPRLHFFMPGFAPLTSRGSQQ Y RALTVP ELTQQVFD AKNMMAACDPRHGRYLTVA AVFRGRMSMKEVDEQMLNVQN KNSSYFVEWIPNNVK TAVCDIPPRGLKMAVTFIGNSTAIQELFKRISEQFTAMFRRKA FLHWYTGE GMDMEFTEAESNMNDLVS

 Tel: 1-631-559-9269 1-516-512-3133

 Email: info@creative-biomart.com  Fax: 1-631-938-8127

 45-1 Ramsey Road, Shirley, NY 11967, USA

EYQQYQDATAEEEEEDFGEEAEEEEATRTRPLEQKLISEEDLAANDILDYKDDDDKV

Purity > 80% as determined by SDS-PAGE and Coomassie blue staining.

Stability Stable for 12 months from the date of receipt of the product under proper storage and handling conditions. Avoid repeated freeze-thaw cycles.

Storage Store at -80 centigrade.

Concentration >50 ug/mL as determined by microplate BCA method.

Preparation Recombinant protein was captured through anti-DDK affinity column followed by conventional chromatography steps.

Protein Families Druggable Genome

Protein Pathways Gap junction, Pathogenic Escherichia coli infection

Full Length Full L.

GENE INFORMATION

Gene Name TUBB tubulin beta class I [Homo sapiens (human)]

Official Symbol TUBB

Synonyms M40; TUBB1; TUBB5; CDCBM6; CSCSC1; OK/SW-cl.56

Gene ID 203068

mRNA Refseq NM_178014.4

 Tel: 1-631-559-9269 1-516-512-3133

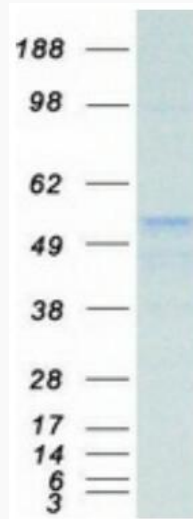
 Email: info@creative-biomart.com  Fax: 1-631-938-8127

 45-1 Ramsey Road, Shirley, NY 11967, USA

Protein Refseq NP_821133.1

MIM 191130

UniProt ID P07437



Coomassie blue staining of purified TUBB protein.

 Tel: 1-631-559-9269 1-516-512-3133

 Email: info@creative-biomart.com  Fax: 1-631-938-8127

 45-1 Ramsey Road, Shirley, NY 11967, USA